



The Voice of Early Childhood



Pittsburgh City Council Child Care Needs Assessment

Engaging Child Care Professionals About Their Needs

Established in 1963 as the Pittsburgh Area Pre-school Association (PAPA), The Pittsburgh Association for the Education of Young Children (PAEYC) has worked for more than 50 years to support high-quality care and education for young children from birth until age nine across 10 counties in Southwestern Pennsylvania. PAEYC provides professional development, community resources and advocacy for the needs and rights of children, their families and the individuals who work with them. PAEYC works to:

- Educate parents, individuals working in the field, and other stakeholders about the best practices in early childhood education, and to help improve the quality of services provided to the children of our region.
- Communicate the value of early childhood education, so that, as a community, we can make wise investments in the future of our children.
- Elevate the status of professionals working in the field of early childhood education, so we can continue to attract and retain individuals who are highly skilled and committed to children and their optimal development.

Pittsburgh Association for the Education of Young Children

5604 Solway
Pittsburgh, PA 15217
www.paeyc.org

Table of Contents

1. Executive Summary	3
2. Investing in Young Children and Families	6
a. A Sensitive Period of Growth	6
b. Child Raising Vulnerability Index	7
c. Support for Early Care and Education	8
d. Program Quality	9
3. Child Care Provider Needs Assessment	10
a. Focus Group and Interviews	10
b. Results	12
i. Staff Development	12
ii. Learning Materials and Programs	12
iii. Facilities and Administration	13
iv. Support for Family Child Care Homes and Family, Friend, and Neighbors Care	13
c. Discussion	14
4. Establishing the Role of the City in Supporting Early Care and Education	15
a. Communicate the Importance of Early Childhood	15
b. Child Care Focused Policies	15
c. Coordinate Resources and Community Partnerships	15

Executive Summary

The child care quality fund established by the Pittsburgh City Council seeks to seed low-interest loans and provide grants to support child care programs to provide high quality care. To have a more detailed understanding of the early care and education landscape, the City Council contracted with the Pittsburgh Association for the Education of Young Children (PAEYC) to conduct a child care provider needs assessment. Through focus groups and individual interviews, PAEYC engaged 75 providers representing 82 of the 205 early care and education programs in the City of Pittsburgh. These providers shared their perspectives on how the child care quality fund could best be used to support their work on behalf of Pittsburgh's young children and families.

Advocates across the commonwealth are working to increase funding and support for early care and education. Additional money is needed to increase the average low wage earned in the field, as well as reimbursement rates that more accurately reflect the true cost of care. However, advocates and state governments cannot do it alone and need the support of local government to ensure that all children get off to a healthy start. Supporting the needs of child care providers is one area where city government can play a role. Child care providers representing a variety of settings and Keystone STARS quality levels highlighted five areas they believe the child care quality fund could best benefit them.

Staff Development

Child care providers know that the strength of their program is a reflection of the quality of their staff. Turnover rates in the field are high, and often the most qualified educators are forced to take higher paying employment elsewhere. Participating providers identified a need for additional support for training, professional development, continuing education, and basic certification requirements (e.g., CPR and First Aid). Funding that covers the continuous cost of staff development has the potential to create room in programs' budgets to increase wages.

Learning Materials and Programming

The second need identified by participating providers is support to create stimulating and caring environments for young children. Care givers need help acquiring developmentally appropriate materials for the different age groups in their programs, as well as digital media tools that will provide children with engaging and cutting edge learning experiences. In addition, participants identified a need for specialized equipment for children with special needs. Finally, providers expressed a need for access to enrichment programs that provide interactive learning activities for children.

Facilities

The cost to maintain and update the space where young children spend their day is often a serious burden to the financial health of child care programs. Providers highlighted their need to make basic updates to their facility (e.g., repaint, clean or replace carpets, and install child-size railings) and to meet health and safety requirements (e.g., security systems, install and monitor fire extinguishers, smoke detectors). In addition to the material and installation costs, providers also highlighted that administrative fees of

working with local government are not large, but often add up. This is particularly the case for programs that are just starting. Finally, providers expressed a desire to invest in outdoor play and learning spaces, as well as shade areas for children to escape to when outside.

Administration

Providers identified a need to invest in administrative capacity. The majority of mandated administrative tasks must be completed electronically. Consequently, providers must purchase or update computers for these purposes, software to operate those computers, and management software to collect and monitor early childhood indicators or a financial record keeping program. In addition to technology, child care providers identified their need to strengthen business practices through participation in business support programs, incorporation, and completing an annual audit.

Support Family Child Care Homes and Family, Friend and Neighbor (FFN) Care

Upcoming changes to the regulations of family child care homes and FFN care highlight the need to focus additional support on this often under-resourced subset of child care providers. Updates to the Child Care Development Block Grant (CCDBG) will work to ensure that children are in safer child care, give more children access to quality early learning experiences, and support families so they can better provide for their children. Family Child Care Homes and FFN providers will need additional investment to meet the new compliance requirements. FFN providers will also need support to effectively interact with local government in order to obtain and pay for occupancy permits to operate child care in their homes. Finally, changes to education and professional development requirements will demand that some providers invest in obtaining basic educational degrees and certifications.

It is clear the City of Pittsburgh must play a crucial role in supporting early care and education programs to provide high quality care for young children and their families. Feedback from providers highlights three areas where they believe the City can effectively support them.

Communicate the Importance of Early Childhood

Local government has the opportunity to use its amplified voice to communicate to Pittsburgh residents the importance of early childhood. Just as crucial, local government has the ability to change the public's perception of the early childhood workforce, moving it away from the notion that they are simply babysitters who allow parents to work, towards the reality of being the child development professionals and care givers they truly are.

Child Care Focused Policies

In addition, local government can further educate its departments and employees about the needs of providers and the many opportunities that exist to engage and support them. With that said, immediate opportunities already exist: directly include child care providers in emergency notification services; identify their place in the community as locations where young children play and learn; and to address the common challenges of parking in the residential areas where child care providers often operate.

Coordinate Resources and Community Partnerships

One final suggestion for local government is to coordinate the identification and communication of existing resources and opportunities that may benefit the early childhood community. Local government can help to establish connections between the various sectors of the early childhood community itself, as well as link child care providers to organizations that can become new and innovative partners in our children's education.

Investing in Young Children and Families

In August 2014, Mayor William Peduto issued an Executive Order creating the Mayor's Blue Ribbon Panel on Early Childhood Education (MBRPECE). The task of the panel was to create a "Pre-natal through Pre-K" continuum of programs and services for all children in the City of Pittsburgh. The complex task brought together a wide range of early childhood experts and stakeholders who provided the Mayor a list of recommendations to improve the quality of existing programs, increase early-childhood workers' pay and training, link programs with neighborhood safety initiatives, augment small-business resources, and increase data collection and analysis.

Shortly after, the Pittsburgh City Council, led by the Women's Caucus, established a \$250,000 child care quality fund to seed low-interest loans and provide grants to support child care providers provide high quality care. Additionally, the City Council contracted with the Pittsburgh Association for the Education of Young Children (PAEYC) to provide a more detailed look at the early care and education (ECE) landscape and conduct a child care provider needs assessment. The report that follows begins with an overview of early childhood indicators and child care in the City of Pittsburgh. It continues with a discussion of the areas child care providers identified that the child care quality fund could support their work to provide high quality ECE. The report concludes with a discussion of upcoming changes to the ECE landscape and recommendations for future actions the City of Pittsburgh can take to invest in the well-being of young children and families in Pittsburgh.

A Sensitive Period of Growth

The first five years of life for all children are a time of rapid growth and are crucial to their continued healthy development¹. It is a time when genetics and experiences combine to either support or hinder the physical, cognitive, social, and emotional development of a child². The detrimental impact of poverty on child development is well-documented^{3,4}. The adversity it causes early in a child's life can alter the architecture of the brain, which has a lasting impact on future development⁵. Also, research indicates that socio-economic status (SES) accounts for differing levels of cognitive and verbal ability upon entering kindergarten⁶. Evidence of the gap in the processing skills that are critical for language development is seen as early as the 18-month mark of a child's life. By the time a child reaches the 24-month mark, this gap has widened to a six-month difference with peers⁷. Combined, these results are alarming considering that children in the United States are 60 percent more likely to be living in poverty than adults ages 18-64, and the nation's youngest children are the poorest, with one in every four infants, toddlers and preschool students living in poverty⁸.

Table 1: Population of Children Ages 0-5 By City Council District

District	Population 0-5	% of Population 0-5
1	2322	6.5%
2	2028	6.4%
3	1326	4.6%
4	2655	6.6%
5	2451	6.1%
6	1724	6.7%
7	1863	4.5%
8	1192	3.8%
9	2526	7.7%

Source: 2010 U.S. Census

Child Raising Vulnerability Index

“Place matters, and neighborhood is particularly important to young children, whose lives often are largely defined by the few blocks around their homes. While parents remain the most important influence on and determinant of young children’s healthy growth, neighborhoods also play a significant role.”⁹

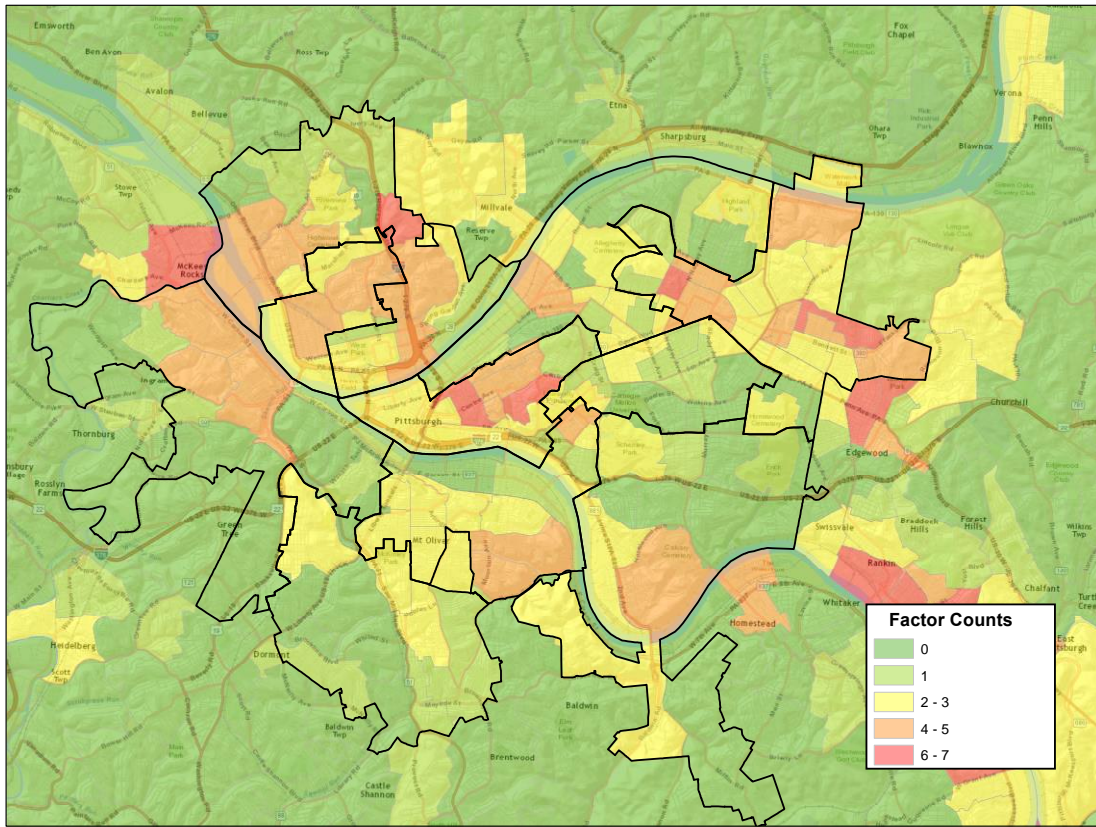
The Child Raising Vulnerability Index¹⁰ is a tool used to analyze neighborhood-level factors that impact early childhood development. This iteration of the index contains nine indicators taken from the 2010 U.S. Census. The indicators are representative of four categories that research has shown to be related to the effect of neighborhoods on child outcomes.

- **Social Indicators:** Percent of single parents; Percent of disconnected 16-19 year olds (not in school or employed).
- **Education Indicators:** Percent of population 25 and over without a high school diploma; Percent of population 25 and over with at least a college degree.
- **Economic Indicators:** Percent of households with wage income; Percent of families with children in poverty; Percent of heads of households on public assistance.
- **Wealth Indicators:** Percent of owner-occupied housing; Percent of households with interest, rent, or dividend income.

For each indicator, the standard deviation (SD) was calculated for all census tracts in Allegheny County. The census tracts that were more than one SD away from the mean in the negative direction were designated as “vulnerable” for a particular indicator. All of the vulnerable indicators for a census tract are summed for the vulnerability score. Figure 1 maps the census tracts of the City of Pittsburgh and the surrounding area to show the number of vulnerability indicators for each census tract. (See Appendix 3 for the Child Raising Vulnerability Index for each census tract of Pittsburgh).

The concentration of orange and red coloring on the map in Figure 1 indicate the geographic areas that have four or more risk factors. The Homewood, Hill District, and North Side areas of the city have the highest levels of child-raising vulnerability compared to other census tracts of Allegheny County. Perhaps more alarming for families and young children is that the risk levels within the city limits of Pittsburgh are relatively higher than the surrounding areas of Allegheny County.

Figure 1: Child Raising Vulnerability Index



Support for Early Care and Education

Caring and stimulating relationships are the foundation for healthy child development. Although family members are the primary source of those relationships, the interactions children have with ECE providers are just as important to their development. Nearly two-thirds of children in the U.S. under five years of age are enrolled in a regular care arrangement with someone who is not their parent, and almost one-fifth are in multiple care arrangement during the course of a week¹¹.

Table 2: Child Care Provider Types by City Council District

District	Child Care Center	Family Child Care Home	Group Child Care Home	Total
1	13	14	4	31
2	9	7	2	18
3	6	8	2	16
4	8	5	1	14
5	7	4	0	11
6	27	14	5	46
7	6	2	4	12
8	10	0	0	10
9	18	25	4	47
Total	104	79	22	205

Family Child Care Home – 4-6 children; Group Child Care Home – 6-12 children; Child Care Center – 7 or more

In the City of Pittsburgh there are a variety of care arrangements families can choose from. They range from half- or full-day programs in a center-based environment to care in a home-based environment during non-traditional work ours. Table 2 shows the break-down of ECE providers in the City of Pittsburgh. There is roughly the same amount of center-based programs and home-based programs.

Family, friend, and neighbor (FFN) care is a subset of home-based care. Recently it has received increased attention due to the number of children spending at least a portion of their day in FFN care. It is the most common form of non-parental care in the U.S, although the frequency of its use differs with the age of the child. Infants and toddlers are more likely to be cared for by FFN as their only source of care, and pre-school age children are more likely to have FFN care as part of their multiple care arrangement¹².

Table 3: FFN Providers and Children Served by City Council District

District	FFN Providers Receiving Child Care Subsidy	Total Children Served	Related Children Served	Non-Related Children Served
1	27	85	22	63
2	18	41	10	31
3	24	47	8	39
4	14	27	0	27
5	6	7	1	6
6	38	85	10	75
7	1	2	0	2
8	0	0	0	0
9	67	166	33	133
Total	195	460	84	376

**Family, Friend & Estimates are counts of individuals receiving child care subsidy to care a for related or non-related children.*

FFN is recognizably different from other child care arrangements in that it encompasses a variety of different caregiver settings and provider characteristics. Typically, FFN caregivers are someone close to the family that provides care in either the home of the child or in their own home. Most often it is grandmothers that agree to help care for the child. In addition, FFN caregivers may provide care to their own children while also caring for unrelated children. Because of their relationship with the parents, the motivation for providing the care differs from other types of child care arrangements. Some providers receive payment for their services, while others do not. In Pennsylvania, families that qualify for child care subsidy can use that subsidy to pay for FFN care. (See Table 3 for the number of FFN providers receiving child care subsidy payments.) FFN providers are not licensed, only loosely regulated, and historically have been difficult to engage. However, upcoming regulatory changes will present a need and an opportunity to develop a strategy to engage this subset of home-based providers and work with them to ensure high quality ECE environments for young children.

Program Quality

A substantial body of research on the impact of ECE exists. The variety of programs can make understanding the impact of ECE difficult. Meta-analysis is a useful tool for synthesizing the results of many different studies. In the case of ECE, meta-analysis shows an average immediate impact on cognitive development, and less, but still meaningful gains for social and emotional development¹³. And, gains in cognitive abilities, school progress, and social behavior last into early adolescence¹⁴. Despite these findings, it should be noted that the cost to implement the high quality needed to achieve these goals may be prohibitive, and there is evidence that the effects decrease over time¹⁵.

“Model” programs, like the Perry Preschool Project, Chicago Family Partnerships, and the Abecedarian Program, show much higher levels of impact. Cost-benefits analyses of model pre-kindergarten programs find long-term benefits such as increased lifetime earnings of the young child, increased investments in the economy, and a lower amount of governmental expenditures on the individual over time^{16,17,18,19}. However, a national study of the quality of pre-k found that many pre-k programs are not high quality and did not compare to the model programs studied²⁰.

The Pennsylvania Office of Child Development and Early Learning works with ECE programs across the commonwealth to improve, support, and recognize continuous quality improvement through the Keystone STARS program. Although Keystone STARS is not the only indicator of quality, and not participating in the program certainly does not indicate the lack of quality in an ECE program, it is a useful tool to gauge the quality of ECE programs in the City of Pittsburgh. Table 3 shows that only 16.1% (n=33) of ECE programs in Pittsburgh are recognized as high quality STARS 3 and 4.

Table 3: ECE Program by STARS Level and City Council District

District	No STAR Level	Not participating	STAR 1	STAR 2	STAR 3	STAR 4	Total
1	17	0	9	2	3	0	31
2	11	0	4	0	2	1	18
3	12	0	1	1	0	2	16
4	8	0	4	1	1	0	14
5	3	0	1	3	1	3	11
6	19	0	13	5	3	6	46
7	6	1	1	2	1	1	12
8	2	3	2	0	0	3	10
9	25	0	12	4	4	2	47
Total	103	4	47	18	15	18	205

Child Care Provider Needs Assessment

Focus Group and Interviews

To better understand how the child care quality fund could support the needs of child care providers, PAEYC was contracted to engage child care providers in each of the nine City Council Districts through a series of focus groups and interviews. To identify child care providers serving children ages 0-5 in Pittsburgh, PAEYC used the Pennsylvania Department of Human Services Public Data File from May 2015. The PAEYC team, with the help of early childhood stakeholders, reviewed the initial list and identified programs not included in the list and programs that no longer provide care to children. A final list of 205 providers was generated. Each of these providers was invited via email and phone calls to attend a focus group in their Council District. In addition, PAEYC leveraged its current involvement in community-driven initiatives to promote participation. Providers unable to attend the initial focus group were given the opportunity to share their suggestions via a phone interview conducted by a member of the PAEYC team.

Table 4: Participating Child Care Providers by Provider Type and City Council District

District	Child Care Center	Family Child Care Home	Group Child Care Home	Total
1	7	6	2	15
2	4	1	2	7
3	3	0	0	3
4	5	2	0	7
5	3	3	0	6
6	14	6	1	21
7	4	1	1	6
8	5	0	0	5
9	4	7	1	12
Total	49	26	7	82

In total, 75 providers, representing 82 child care locations in Pittsburgh provided suggestions for how the child care quality fund could best support them to provide high quality ECE. Participating providers represented the full range of provider types and Keystone STARS quality levels. Although Table 4 shows that a slightly higher number (n=40) of center-based programs participated than home-based programs (n=32), there was significant participation from each group. With nearly two-thirds (n=52) of participating providers representing No STAR Level or STAR 1 programs, Table 5 highlights the interest of under-resourced programs to access additional funding to support their work.

Table 5: Participating Child Care Provider by STARS Level and City Council

District	No STAR Level	STAR 1	STAR 2	STAR 3	STAR 4	Not Participating	Total
1	8	4	1	2	0	0	15
2	3	2	0	2	0	0	7
3	1	0	1	0	1	0	3
4	2	3	1	1	0	0	7
5	2	1	1	0	2	0	6
6	8	5	3	0	5	0	21
7	1	1	1	1	1	1	6
8	1	0	0	0	3	1	5
9	4	6	1	0	1	0	12
Total	30	22	9	6	13	2	82

Results

Nearly every focus group and interview identified the need for increased early care and education funding. Additional money is needed to increase the average low wage earned by the field, as well as reimbursement rates that more accurately reflect the true cost of care. Advocates across the commonwealth are working to increase funding and support for early care and education. However, advocates and state governments cannot do it alone and need the support of local government to ensure that all children get off to a healthy start.

Although the child care quality fund will not address the systemic need for increased ECE investment, it can support child care providers by addressing other areas of need so they can better focus their energy on interactions and the healthy development of young children. To this end, participating child care providers identified five areas where they believe the child care quality fund could best benefit the work they do on behalf of young children and families (See Figure 2).

Figure 2: Child Care Providers Identified Areas of Needs

Areas of Need				
Staff Development -Professional Development -Basic Certification Requirements	Learning Materials & Programming -Digital Media Literacy Tools -Infant & Toddler Equipment -Enrichments Programs -Indoor & Outdoor Play Equipment	Facilities -ADA Accessibility -Sinks, Bathrooms, Plumbing -Outdoor Play Spaces -Health, Fire & Safety	Administration -Technology (Hardware & Software) -Liability Insurance -Business Planning & Incorporation	FFN Care -Compliance Requirements -Occupancy Permits -PD and Education Requirements

Staff Development

Child care providers know that the strength of their program is a reflection of the quality of their staff. Turnover rates in the field are high, and often the most qualified educators are forced to take higher paying employment elsewhere. Consequently, participants noted that compensating and supporting their high quality staff is where they would spend their money. Participating providers identified a need for additional support for training, professional development, continuing education, and basic certification requirements (e.g., CPR and First Aid). Funding that covers the continuous cost of staff development has the potential to create room in programs' budgets to increase wages.

Learning Materials and Programming

The second need identified by participating providers is support to create stimulating and caring environments for young children. Care givers need help acquiring developmentally appropriate materials for the different age groups in their programs, as well as digital media tools that will provide children with engaging and cutting edge learning experiences. In addition, participants identified a need for specialized equipment for children with special needs. Finally, providers expressed a need for access to enrichment programs that provide interactive learning activities for children.

Facilities

The cost to maintain and update the space where young children spend their day is often a serious burden to the financial health of child care programs. Providers highlighted their need to make basic updates to their facility (e.g., repaint, clean or replace carpets, and install child-size railings), meet health and safety requirements (e.g., security systems, install and monitor fire extinguishers, smoke detectors), and ensure ADA compliance. In addition to the material and installation costs, providers also highlighted that the administrative fees of working with local government are not large, but quickly add up. This is particularly difficult for programs that are just beginning. Finally, providers expressed a desire to invest in outdoor play and learning spaces, as well as shade areas for children to escape to when outside.

Administration

Providers identified a need to invest in administrative capacity. The majority of mandated administrative tasks must be completed electronically. Consequently, providers must purchase or update computers for these purposes, software to operate those computers, and management software to collect and monitor early childhood indicators or a financial record keeping program. In addition to technology, child care providers identified their need to strengthen business practices through participation in business support programs, incorporation, and completing an annual audit.

Support Family Child Care Homes and Family, Friend and Neighbor (FFN) Care

Upcoming changes to the regulations of family child care homes and FFN care highlight the need to focus additional support on this often under-resourced subset of child care providers. Updates to the Child Care Development Block Grant (CCDBG) will work to ensure that children are in safer child care, give more children access to quality early learning experiences, and support families so they can better provide for their children.

Specifically, family child care homes will need an annual Certificate of Compliance and receive annual unannounced inspections. In addition, they will need to participate in 10 hours of professional development on health and safety topics. Finally, they may need to show a high school diploma or equivalency upon renewal of their Certificate of Compliance. FFN caregivers will need to become certified family child care providers in order to continue to receive child subsidy, and therefore will need to meet the newly established criteria for family child care homes. Although relatives and providers not receiving subsidy will be exempt from the changes, a great deal of uncertainty will need to be addressed and a communication strategy will need to be developed. In addition, providers will now need an occupancy permit, which may present additional fees.

Family Child Care Homes and FFN providers will need additional investment to meet the new compliance requirements. FFN providers will also need support to effectively interact with local government in order to obtain and pay for occupancy permits to operate child care in their homes. Finally, changes to education and professional development requirements will demand that some providers invest in obtaining basic educational degrees and certifications.

Discussion

In addition to identifying areas of need, participating providers made suggestions regarding possible obstacles they foresee in receiving and a loan or grant from the city and any type of support they would need to submit an application. Their suggestions are grouped in three categories below.

Table 6: Likelihood of Submitting a Grant or Loan Application

How likely are you to submit a grant application to City of Pittsburgh in order to:		
Responses	Likely or Very Likely	Total Responses
Make improvements to your property	81.7% (n=58)	71
Make Health and safety improvements	84.5% (n=60)	71
Purchase Program Equipment	82.9% (n=58)	70
Conduct a planning process to move ahead with a facility project or new business idea.	68.6% (n=48)	70
How likely are you to submit a loan application to City of Pittsburgh in order to:		
Responses	Likely or Very Likely	Total Responses
Purchase equipment	32.9% (n=23)	70
Renovate a facility	42.3% (n=30)	71
Expand your facility	39.4% (n=28)	71
Expand your program	42.3% (n=30)	71

Loans and Grants

Participating providers were asked to share how likely they would be to submit a grant or loan application to address some of their needs. Table 6 clearly shows that providers expressed a preference for grant over loans. However, providers noted that a low-interest loans at rates lower than market value would help address some of their larger needs, especially when they are just starting out.

Clear Guidelines and Expectation

To gauge providers willingness and ability to present documentation needed to secure a grant or loan, they were asked if they would be able to provide three or five years of financial records. The majority of providers responded that they would. However, it is important to note that based on previous experiences some providers did mention that they may experience difficulties in accessing funding from the City. They suggest clearly communicated guidelines for how the money can be used, who is eligible to receive the funds, and expectations for reporting.

Rent Versus Own

Although many ECE providers own their place of business, many do not. Whether or not an ECE provider rents or owns would not impact receiving funds for equipment or professional development. However, in the case of renovations, landlords will need to be consulted, and in many cases may need to participate in the process. Also, in the case of home-based providers, the City will need to determine guidelines for what is considered an investment to improve child care quality, and what is considered a home-improvement not related to the quality of child care provided in the home.

Establishing the Role of the City In Early Care and Education

It is clear the City of Pittsburgh must play a crucial role in supporting early care and education programs to provide high quality care for young children and their families. Feedback from providers highlights three areas where they believe the City can effectively support them.

Communicate the Importance of Early Childhood

Local government has the opportunity to use its amplified voice to communicate to Pittsburgh residents the importance of early childhood. Just as crucial, local government has the ability to change the public's perception of the early childhood workforce, moving it away from the notion that they are simply babysitters who allow parents to work, towards the reality of being child development professionals and care givers they truly are.

Child Care Focused Policies

In addition, local government can further educate its departments and employees about the needs of providers and the many opportunities that exist to engage and support them. With that said, immediate opportunities already exist: directly include child care providers in emergency notification services; identify their place in the community as locations where young children play and learn (e.g. signage to slow down traffic); and to address the common challenges of parking in the residential areas where child care providers often operate. In addition, providers expressed that an increased focus on public safety in their neighborhoods would not only benefit them, but also the families in the their program.

Coordinate Resources and Community Partnerships

One final suggestion for local government is to coordinate the identification and communication of existing resources and opportunities that may benefit the early childhood community. Local government can help to establish connections between the various sectors of the early childhood community itself, as well as link child care providers to organizations that can become new and innovative partners in our children's education.

-
- ¹ Shore, R. (1997). *Rethinking the brain: New insights into early development*. New York: Families and Work Institute.
- ² Shonkoff, J. P., Garner, A. S., Siegel, B. S., Dobbins, M. I., Earls, M. F., McGuinn, L., ... Wood, D. L. (2012). The Lifelong Effects of Early Childhood Adversity and Toxic Stress. *PEDIATRICS*.
- ³ Ibid.
- ⁴ Zuckerman, B. S. (2012). Impact of early childhood on health throughout the lifespan. In *Infants, toddlers, and families in poverty: Research implications for early child care*. (pp. 232–253). Guilford Press, New York, NY.
- ⁵ Shonkoff, J. P., Garner, A. S., Siegel, B. S., Dobbins, M. I., Earls, M. F., McGuinn, L., ... Wood, D. L. (2012). The Lifelong Effects of Early Childhood Adversity and Toxic Stress. *PEDIATRICS*.
- ⁶ Lee, V. E., & Burkam, D. T. (2002). *Inequality at the starting gate: Social background differences in achievement as children begin school*. Washington DC: Economic Policy Institute.
- ⁷ Fernald, A., Marchman, V. A., & Weisleder, A. (2013). SES differences in language processing skill and vocabulary are evident at 18 months. *Developmental Science*, 16(2), 234–48.
- ⁸ Children's Defense Fund. (2014). *The State of America's Children 2014*. Washington, DC.
- ⁹ Bruner, C., & Tirmizi, S.N. (2007). *Census tracts and child-raising: Place-based implications for child and family policy investments and reforms*.
- ¹⁰ Ibid.
- ¹¹ Laughlin, L. (2013). *Who's mind the kids? Child care arrangements: Spring 2011*. Washington, DC.
- ¹² Susman-Stillman, A., & Banghart, P. (2008). *Demographics of family, friend, and neighbor child care in the United States*. National Center for Children in Poverty.
- ¹³ Camilli, G., Vargas, S., Ryan, S., & Barnett, W. S. (2010). Meta-analysis of the effects of early education interventions on cognitive and social development. *Teachers College Record*, 112(3), 579–620.
- ¹⁴ Aos, S., Lieb, R., Mayfield, J., Miller, M., & Pennucci, A. (2004). *Benefits and costs of prevention and early intervention programs for youth*. Olympia, WA.
- ¹⁵ Finn, C. E. (2009). *Reroute the Preschool Juggernaut*. Stanford, CA: Hoover Press.
- ¹⁶ Barnett, W. S., & Masse, L. N. (2007). Comparative benefit-cost analysis of the Abecedarian program and its policy implications. *Economics of Education Review*, 26, 113–125.
- ¹⁷ Belfield, C. R., Nores, M., Barnett, S., & Schweinhart, L. (2006). The High / Scope Perry Preschool Program Cost-Benefit Analysis Using Data from the Age-40 Followup. *The Journal of Human Resources*, 41, 162–190.

-
- ¹⁸ Reynolds, A. J., Temple, J. A., Robertson, D. L., & Mann, E. A. (2002). Age 21 Cost-Benefit Analysis of the Title I Chicago Child-Parent Centers. *Educational Evaluation and Policy Analysis*.
- ¹⁹ Temple, J. A., & Reynolds, A. J. (2007). Benefits and costs of investments in preschool education: Evidence from the Child-Parent Centers and related programs. *Economics of Education Review*, 26, 126–144.
- ²⁰ Barnett, W. S., & Nores, M. (2013). *Equitable access to quality preschool*. New Brunswick, NJ.

Appendix 1: Focus Group Methodology

To better understand how the City Council's child care quality fund could benefit the needs of ECE providers in the City of Pittsburgh, PAEYC was contracted to gather information on the needs of providers. To begin the project, a representative of PAEYC met with the Councilperson from each of the nine districts, or a one of their representatives. The meeting was used to clarify the scope of the work, and to identify any existing relationships with child care providers in community organizations in the Council District.

The initial set of focus group interview questions was sent to the Women's Caucus for feedback and approval, and suggestions were incorporated into the final draft. ECE providers in Pittsburgh serving children ages 0-5 were identified using the Department of Human Services Public Data File from May 2015. The PAEYC team, with the help of early childhood stakeholders, reviewed the initial list to identify programs not included on the list, and programs that no longer serve children. A final list of 205 ECE providers was compiled, and each provider was assigned to their respective Council District.

Each provider was invited via email and phone calls to attend a focus group in their Council District. In addition, PAEYC leveraged its current involvement in community-driven initiatives to promote participation. As an incentive, each participating provider was given a gift card after completing the focus group or interview.

Table 7: Focus Group Location by Council District

Council District	Focus Group Location
1	Three focus groups conducted on the North Side in conjunction with District 6.
2	One focus group scheduled at the Education Collaborative – Cancelled due to inclement weather. Times were arranged to speak with each provider over the phone to conducted extended phone interviews.
3	One focus group schedule at CLP-South Side Library – Cancelled due to inclement weather. Times were arranged to speak with each provider over the phone to conduct extended phone interviews.
4	One focus group held at the Seton Center.
5	One focus group held at PAEYC Early Learning Hub – Hazelwood.
6	One focus group held at the CLP-Hill District for providers located in the Hill District, Uptown, and Downtown. Three focus groups conducted on the North Side in conjunction with District 1.
7	One focus group held at Arsenal Child Development Center.
8	One focus group held at the Carriage House Child Care Center.
9	Two focus groups were held at the PAEYC Early Learning Hub – Homewood.

While it is more common for a child care center to have an administrator with the flexibility to attend functions outside of their day-to-day routine of child care, home-based child care providers often are the only person caring for children and are unable to leave

their home to attend a meeting. Also, many home-based providers care for children during non-traditional hours (e.g., evenings and weekends), further complicating their ability to attend a community meeting. Consequently, finding a time that works well each provider's schedule is impossible. Early evenings were found to be the best time for the majority of providers. In addition, providers that were unable to attend the initial focus group were given the opportunity to share their suggestions via a phone interview conducted by a member of the PAEYC team. In two cases, a focus group was canceled due to inclement weather. In both cases, all providers were contacted and a time was scheduled to conduct a phone interview.

Appendix 2: Early Care and Education Providers in the City of Pittsburgh

District	Provider Type	Name	Address	Zip Code	STAR Level
1	Child Care Center	CHILD OF THE KING	302 W NORTH AVE	15212	No STAR Level
1	Child Care Center	BANKS LEARNING CENTER FOUR INC	409 E OHIO ST	15212	No STAR Level
1	Child Care Center	MALAIKA LEARNING CENTER	3556 SHADELAND AVE	15212	STAR 2
1	Child Care Center	PROVIDENCE FAMILY SUPPORT CTR CHILDRENS PROGRAM	3113 BRIGHTON RD	15212	STAR 3
1	Child Care Center	TLC LEARNING CENTER	1133 HIGHWOOD ST	15212	STAR 3
1	Child Care Center	CHILDREN OF THE KINGDOM	3885 EAST ST	15214	STAR 1
1	Child Care Center	MAMAS LITTLE ANGELS LEARNING CENTER	2821 PERRYSVILLE AVE	15214	STAR 1
1	Child Care Center	A S WEE CARE	3004 STAYTON ST	15212	STAR 1
1	Child Care Center	TEENIES TOTS CHILD CARE CENTER	3311 BRIGHTON RD	15212	STAR 1
1	Child Care Center	ANGEL ACADEMY	3615 CALIFORNIA AVE	15212	STAR 1
1	Child Care Center	COMMUNITY PRESCHOOL AND NURSERY	116 E NORTH AVE	15212	STAR 1
1	Child Care Center	ALLEGHENY GENERAL HOSPITAL CENTER FOR CHILDREN	621 E NORTH AVE	15212	STAR 3
1	Child Care Center	A S WEE CARE	2809 BRIGHTON RD	15212	STAR 1
1	Family Child Care Home	JOETTA L SZCZERBINSKI FAMILY CHILD CARE HOME	2901 MULLINS ST	15212	STAR 2
1	Family Child Care Home	BRENDA L UPSHER FAMILY CHILD CARE HOME	3250 BAINTON ST	15212	No STAR Level
1	Family Child Care Home	LINDA D MCCOY FAMILY CHILD CARE HOME	115 PENFORT ST	15214	No STAR Level
1	Family Child Care Home	CATHY MULDROWS CAREFUL CHILD CARE	2713 BRIGHTON RD	15212	No STAR Level
1	Family Child Care Home	TERRY L PEGUES FAMILY CHILD CARE HOME	215 ESSEN ST	15214	No STAR Level
1	Family Child Care Home	TERRY L PEGUES FAMILY DAYCARE	204 ESSEN ST	15214	No STAR Level
1	Family Child Care Home	JAILENS GIFT	1128 STANFORD RD	15212	No STAR Level
1	Family Child Care Home	YOLANDA A DAVIS FAMILY CHILD CARE HOME	103 MARSHALL AVE	15214	No STAR Level
1	Family Child Care Home	WADES FAMILY DAY CARE	1321 ARCH ST	15212	No STAR Level
1	Family Child Care Home	GINA LEE FAMILY CHILD CARE HOME	31 BONVUE ST	15214	No STAR Level
1	Family Child Care Home	JACQUELINE V JOHNSON FAMILY CHILD CARE HOME	2 MAUCH ST	15212	No STAR Level

Distri ct	Provider Type	Name	Address	Zip Code	STAR Level
1	Family Child Care Home	MIDNIGHT MOMMY OVERNIGHT CHILD CARE SERVICES	3417 PORTOLA ST	15214	No STAR Level
1	Family Child Care Home	CHARLENE C MYERS FAMILY DAY CARE	1232 WOODLAND AVE	15212	STAR 1
1	Family Child Care Home	MARY E SMITH FAMILY CHILD CARE HOME	4041 VINCETON ST	15214	No STAR Level
1	Group Child Care Home	JONES EARLY LEARNING CENTER AT CHATHAM SCHOOL INC	227 BONVUE ST	15214	No STAR Level
1	Group Child Care Home	A TOTS SPOT DAYCARE AND EARLY LEARNING CENTER	1605 LOWRIE ST	15212	STAR 1
1	Group Child Care Home	AUNT TERRYS DAYCARE	210 ESSEN ST	15214	No STAR Level
1	Group Child Care Home	AUNT TERRYS DAYCARE	214 ESSEN ST	15214	No STAR Level
2	Child Care Center	CRAFTON CHILDRENS CORNER	2760 BANKSVILLE AVE	15216	STAR 3
2	Child Care Center	ABOVE AND BEYOND CHILD CARE CENTER	2165 NOBLESTOWN RD	15205	No STAR Level
2	Child Care Center	TRAIN UP A CHILD DAYCARE AND LEARNING CENTER	2849 CHARTIERS AVE	15204	No STAR Level
2	Child Care Center	THE LEARNING LADDER	635 HILLSBORO ST	15204	STAR 1
2	Child Care Center	MS IDAS CHILD CARE CENTER	825 LORENZ AVE	15220	No STAR Level
2	Child Care Center	MARIAN MANOR CHILD DVPT AND LRG CENTER	2695 WINCHESTER DR	15220	STAR 4
2	Child Care Center	GRANDVIEW MONTESSORI	131 BIGHAM ST	15211	No STAR Level
2	Child Care Center	MS IDAS CHILD CARE CENTER	820 LORENZ AVE	15220	STAR 1
2	Child Care Center	MT WASHINGTON CHILDREN'S CENTER	200 SOUTHERN AVE	15211	STAR 3
2	Family Child Care Home	CARLETTA SEALS FAMILY DAYCARE	1123 SUTHERLAND ST	15204	No STAR Level
2	Family Child Care Home	SWEET DREAMS CHILD CARE LLC	773 SHERWOOD AVE	15204	No STAR Level
2	Family Child Care Home	NINA RUSSAWS DAYCARE	14 ARNOLD ST	15205	STAR 1
2	Family Child Care Home	VIVIAN E RAY FAMILY CHILD CARE HOME	133 WABASH ST	15220	No STAR Level
2	Family Child Care Home	BREWER CRAIG FAMILY DAYCARE	2943 MERWYN AVE	15204	No STAR Level
2	Family Child Care Home	ELIZABETH M MITCHELL FAMILY CHILD CARE HOME	3107 LANDIS ST	15204	No STAR Level
2	Family Child Care Home	MARY KAY HENRYS CHILD CARE	739 WENZELL AVE	15216	No STAR Level
2	Group Child Care Home	GREATER LOVE OUTREACH	200 TABOR ST	15204	No STAR Level

Distri ct	Provider Type	Name	Address	Zip Code	STAR Level
2	Group Child Care Home	THE LEARNING LADDER	643 HILLSBORO ST	15204	STAR 1
3	Child Care Center	THE TEETER-TOTTER	801 E WARRINGTON AVE	15210	No STAR Level
3	Child Care Center	HILLTOP COMMUNITY CHILDRENS CENTER	201 ORCHARD PL	15210	STAR 4
3	Child Care Center	SOUTH SIDE CHILDRENS CENTER	73 S 18TH ST	15203	No STAR Level
3	Child Care Center	THE LEARNING TREE SCHOOLS	2005 SARAH ST	15203	STAR 2
3	Child Care Center	BRIGHT HORIZONS AT SOUTHSIDE WORKS	2629 E CARSON ST	15203	No STAR Level
3	Family Child Care Home	TAMANI ELDRIDGE FAMILY CHILD CARE HOME	222 E WARRINGTON AVE	15210	No STAR Level
3	Family Child Care Home	ALTIMEASE N TANN FAMILY CHILD CARE HOME	67 CLIMAX ST	15210	No STAR Level
3	Family Child Care Home	MONICA GRANTS DAY CARE	712 BELTZHOVER AVE	15210	No STAR Level
3	Family Child Care Home	PLAY-TIME CHILDREN CENTER	85 LAFFERTY AVE	15210	No STAR Level
3	Family Child Care Home	LAVEITA GIBSON FAMILY CHILD CARE HOME	113 JUCUNDA ST	15210	No STAR Level
3	Family Child Care Home	MASSIE L GRISETT FAMILY CHILD CARE HOME	171 KNOX AVE	15210	No STAR Level
3	Family Child Care Home	A MOTHERS TOUCH	137 MICHIGAN ST	15210	No STAR Level
3	Family Child Care Home	KIM MANGHAM FAMILY DAYCARE	712 PLINEY WAY	15210	No STAR Level
3	Group Child Care Home	ACATL FAMILY DAYCARE	3217 WARD ST	15213	No STAR Level
3	Group Child Care Home	A+ CHILDCARE	705 E WARRINGTON AVE	15210	STAR 1
3	Child Care Center	THE CHILDREN'S CENTER OF PITTSBURGH	327 CRAFT AVE	15213	STAR 4
4	Child Care Center	BROOKLINE KIDS PRESCHOOL AT BROOKLINE	1036 BROOKLINE BLVD	15226	STAR 1
4	Child Care Center	TODDLERS PATCH CHILDCARE CTR	2106 BROWNSVILLE RD	15210	STAR 1
4	Child Care Center	A+ CHILD CARE LLC	2510 BROWNSVILLE RD	15210	STAR 1
4	Child Care Center	MOTHER GOOSE & FRIENDS LRNG CTR	2467 MCNEILLY RD	15226	No STAR Level
4	Child Care Center	ELIZABETH SETON CENTER- CHILDRENS PROGRAM	1900 PIONEER AVE	15226	STAR 3
4	Child Care Center	WHITES TOTS TO TEENS DAYCARE	2801 Custer Ave	15227	No STAR Level
4	Child Care Center	ANGELS PLACE INC	600 FORDHAM AVE	15226	STAR 1
4	Family Child Care Home	LAURA KRESS FAMILY CHILD CARE HOME	1738 FAIR ACRES AVE	15216	No STAR Level
4	Family Child Care Home	CLARAS COMMUNITY CHILDCARE	802 GALLION AVE	15226	No STAR Level

Distri ct	Provider Type	Name	Address	Zip Code	STAR Level
4	Family Child Care Home	JOAN COTTER FAMILY CHILD CARE HOME	410 BIRMINGHAM AVE	15210	No STAR Level
4	Family Child Care Home	DONNA SEIGLERS FAMILY DAY CARE	1311 BROOKLINE BLVD	15226	No STAR Level
4	Family Child Care Home	MELISSA A CHRZANOWSKI FAMILY CHILD CARE HOME	115 HORNADAY RD	15210	No STAR Level
4	Group Child Care Home	HEAVENS MVPS CHILD LEARNING CARE CENTER	2637 BROWNSVILLE RD	15227	No STAR Level
4	Child Care Center	MUNCHKIN UNIVERSITY	3001 SUSSEX AVE		STAR 2
5	Child Care Center	BETH SHALOM EARLY CHILDHOOD DEPT.	5915 BEACON ST	15217	STAR 4
5	Child Care Center	HILLEL ACADEMY OF PITTSBURGH	5685 BEACON ST	15217	STAR 4
5	Child Care Center	JEWISH COMMUNITY CENTER	5738 FORBES AVE	15217	STAR 3
5	Child Care Center	LA ESCUELITA ARCOIRIS	5915 BEACON ST	15217	STAR 2
5	Child Care Center	THE EARLY LEARNING CENTER AT YESHIVA	6401 FORBES AVE	15217	STAR 2
5	Child Care Center	LITTLE BLESSINZ DAY CARE	1234 MULDOWNNEY AVE	15207	No STAR Level
5	Child Care Center	BRIGHTSIDE ACADEMY EARLY CARE EDUCATION	826 HAZELWOOD AVE	15217	STAR 4
5	Family Child Care Home	A HOME AWAY FROM HOME CHILD CARE	236 MANSION ST	15207	No STAR Level
5	Family Child Care Home	ZAHRA SHAHDY FAMILY CHILD CARE	5630 DARLINGTON RD	15217	No STAR Level
5	Family Child Care Home	ARDELIA R TERRY FAMILY CHILD CARE HOME	99 COURTLAND ST	15207	STAR 2
5	Family Child Care Home	ANDREA COLEMAN-BETTS FAMILY DAYCARE HOME	204 HAZELWOOD AVE	15207	STAR 1
6	Child Care Center	TRAINING WHEELS CHILD DAY CARE CENTER	1214 LIVERPOOL ST	15233	STAR 2
6	Child Care Center	FAMILY RESOURCES THERAPEUTIC PRESCHOOL	1425 FORBES AVE	15219	No STAR Level
6	Child Care Center	FIRST STOP CHILD CARE CTR	671 BRYN MAWR RD	15219	No STAR Level
6	Child Care Center	ANGELS PLACE	2615 NORWOOD AVE	15214	STAR 4
6	Child Care Center	KINDER CARE LRNG CTR	600 GRANT ST	15219	STAR 1
6	Child Care Center	METROPOLITAN PRESCHOOL AND NURSERY	938 PENN AVE # 940	15222	STAR 1
6	Child Care Center	SMALL WORLD EARLY LEARNING AND DEVELOPMENT CTR 2	960 PENN AVE	15222	STAR 4
6	Child Care Center	SMALL WONDERS AT THE UPMC	3875 BIGELOW BLVD	15213	No STAR Level
6	Child Care Center	UPMC MERCY CHILD DEVELOPMENT	1401 FORBES AVE	15219	STAR 1

Distri ct	Provider Type	Name	Address	Zip Code	STAR Level
6	Child Care Center	SCHENLEY HEIGHTS COMMUNITY DEVELOPMENT AT GRACE	1000 BRYN MAWR RD	15219	No STAR Level
6	Child Care Center	METROPOLITAN PRESCHOOL AND NURSERY- WARNER CENTER	332 5TH AVE	15222	STAR 2
6	Child Care Center	SMALL WORLD EARLY LEARNING AND DEVELOPMENT CENTER	607 PENN AVE	15222	STAR 4
6	Child Care Center	ROBINS NEST	2404 PERRYSVILLE AVE	15214	STAR 1
6	Child Care Center	MATILDA THEISS CHILD DEVELOPMENT CENTER	373 BURROWS ST	15213	STAR 4
6	Child Care Center	UPMC MERCY CHILD DEV CTR EMIRE	1400 LOCUST ST	15219	STAR 1
6	Child Care Center	CARLOW EARLY LEARNING CENTER	3333 5TH AVE	15213	STAR 4
6	Child Care Center	OAKLAND SUNSHINE DAY CARE & LNG CTR	2358 5TH AVE	15213	STAR 3
6	Child Care Center	IN GOD WE TRUST OUR LITTLE ONES DAYCARE	100 SMITHFIELD ST FL 1	15222	STAR 1
6	Child Care Center	BRIGHTSIDE ACADEMY EARLY CARE EDUCATION	415 SMITHFIELD ST	15222	STAR 2
6	Child Care Center	SCHENLEY HEIGHTS COMMUNITY DEVELOPMENT PROGRAM	3171 EWART DR	15219	No STAR Level
6	Child Care Center	JOHN HEINZ CHILD DEV CTR	2001 WYANDOTTE ST	15219	STAR 2
6	Child Care Center	HUG ME TIGHT CHILDLIFE CENTERS INC	1801 CENTRE AVE STE 100	15219	STAR 3
6	Child Care Center	BRIGHTSIDE ACADEMY EARLY CARE EDUCATION	FOUR SMITHFIELD STREET	15222	STAR 3
6	Child Care Center	THE OBRIEN FAMILY CENTER	500 1ST AVE	15219	No STAR Level
6	Child Care Center	YMCA OF GREATER PGH- DUQUESNE UNIVERSITY CHILD CARE	1315 BLUFF ST	15219	STAR 4
6	Child Care Center	BRIGHTSIDE ACADEMY INC	925 LIBERTY AVE	15222	STAR 1
6	Child Care Center	HUG ME TIGHT CHILDLIFE CENTER INC-HILL HOUSE	1835 CENTRE AVE	15219	STAR 1
6	Family Child Care Home	DENNA M DIXON FAMILY CHILD CARE HOME	1447 SANDUSKY ST	15212	No STAR Level
6	Family Child Care Home	SHIRLEY WILLIAMS FAMILY DAYCARE	1212 PENNSYLVANIA AVE	15233	STAR 2
6	Family Child Care Home	GWENDOLYN A JENNINGS FAMILY CHILD CARE HOME	2630 LINWOOD AVE	15214	No STAR Level
6	Family Child Care Home	PATRICK C WOLF FAMILY CHILD CARE HOME	2635 NORWOOD AVE	15214	No STAR Level
6	Family Child Care Home	GWENDOLYN A JENNINGS FAMILY CHILD CARE HOME	2632 LINWOOD AVE	15214	No STAR Level

Distri ct	Provider Type	Name	Address	Zip Code	STAR Level
6	Family Child Care Home	MARY E SMITH FAMILY CHILD CARE HOME	2506 HAZELTON ST	15214	No STAR Level
6	Family Child Care Home	MS BEES DAY CARE HOME	3124 TERRACE ST	15213	No STAR Level
6	Family Child Care Home	DAYNA M WATSON FAMILY CHILD CARE HOME	1239 W NORTH AVE	15233	No STAR Level
6	Family Child Care Home	DAREA MAHDIS TINY TOTS	1006 PENNSYLVANIA AVE	15233	No STAR Level
6	Family Child Care Home	LOUISE HARRIS FAMILY CHILD CARE HOME	1303 N FRANKLIN ST	15233	No STAR Level
6	Family Child Care Home	GWENDOLYN A CRAVEN FAMILY CHILD CARE HOME	1244 PENNSYLVANIA AVE	15233	No STAR Level
6	Family Child Care Home	SYLVIA LEE COOKS FAMILY CHILD CARE HOME	1333 COLUMBUS AVE	15233	No STAR Level
6	Family Child Care Home	FRIENDSHIPS PLAY HOUSE	2530 MAPLE AVE	15214	No STAR Level
6	Family Child Care Home	WOODSONS TINY TOTS	3 OVERLOOK ST	15214	No STAR Level
6	Group Child Care Home	KELLY'S KINDGDOM	2621 WEBSTER AVE	15219	STAR 1
6	Group Child Care Home	MRS NICKS KIDS LEARNING CENTER	2637 MAPLE AVE	15214	STAR 1
6	Group Child Care Home	AUNTIEES DAY CARE	2534 PERRYVILLE AVE	15214	STAR 1
6	Group Child Care Home	GWENNYPOOHS DAYCARE	1406 LIVERPOOL ST	15233	STAR 1
6	Group Child Care Home	KELLYS KINGDOM II	2612 1/2 WEBSTER AVE	15219	STAR 1
7	Child Care Center	CHILDS WAY	5324 PENN AVE	15224	STAR 3
7	Child Care Center	LITTLE TOTS ACADEMY	4917 FRIENDSHIP AVE	15224	No STAR Level
7	Child Care Center	ITS A SMALL WORLD DAY CARE CENTER	4900 FRIENDSHIP AVE	15224	No STAR Level
7	Child Care Center	EARTHEN VESSELS OUTREACH	250 S PACIFIC AVE	15224	STAR 2
7	Child Care Center	CATHOLIC YOUTH ASSOCIATION OF PGH INC	286 MAIN ST	15201	STAR 2
7	Child Care Center	ARSENAL FAMILY & CHILDRENS CENTER	336 S AIKEN AVE	15232	STAR 4
7	Family Child Care Home	DEAKINGS DAYCARE	1129 MELLON ST	15206	No STAR Level
7	Group Child Care Home	DEAKINGS DAYCARE	5446 JACKSON ST	15206	No STAR Level
7	Group Child Care Home	THE DEAKINGS DAY CARE	5446 JACKSON ST	15206	No STAR Level
7	Group Child Care Home	SIMPLY KIDZ ZONE EARLY LEARNING CENTER	5813 BRYANT ST	15206	STAR 1
7	Group Child Care Home	LITTLE FRIENDS- WALDORF SCHOOL OF PITTSBURGH	215 S WINEBIDDLE ST	15224	No STAR Level
7	Family child care home	THE FARM	1100 NORMAHILL DR	15201	Not participating

Distri ct	Provider Type	Name	Address	Zip Code	STAR Level
8	Child Care Center	CHILDREN'S SCHOOL AT CMU	CMU MMC 17	15213	Not participating
8	Child Care Center	CYERT CENTER FOR EARLY EDUCATION	CMU MMC 17	15213	No STAR Level
8	Child Care Center	A CHILDS VIEW	250 N BELLEFIELD AVE	15213	STAR 1
8	Child Care Center	FIFTH AVENUE FAMILY CHILD CARE	6425 5TH AVE	15206	No STAR Level
8	Child Care Center	UNIVERSITY CHILD DEVELOPMENT CENTER	635 CLYDE ST	15213	STAR 4
8	Child Care Center	CHILDREN AS PROFESSIONALS LLC	5850 CENTER AVE	15206	STAR 1
8	Child Care Center	TENDER CARE LEARNING CENTER-SHADYSIDE	5030 CENTRE AVE	15213	STAR 4
8	Child Care Center	CARRIAGE HOUSE CHILDREN'S CENTER	5604 SOLWAY ST	15217	STAR 4
8	Child Care Center	CALVARY CHURCH – BEGINNINGS PRESCHOOL	315 SHADY AVE	15232	Not participating
8	Child Care Center	RODEF SHALOM PRESCHOOL	4905 FIFTH AVE	15213	Not Participating
8	Child Care Center	SHADY SIDE PRESBYTERIAN NURSERY SCHOOL	5121 WESTMINSTER	15232	Not participating
9	Child Care Center	HOMEWOOD-BRUSHTON YWCA	6907 FRANKSTOWN AVE	15208	STAR 4
9	Child Care Center	CHARITY CHRISTIAN CHILD CARE CENTER	566 BRUSHTON AVE	15208	STAR 1
9	Child Care Center	JEREMIAHS PLACE- PITTSBURGH RELIEF NURSERY	6435 FRANKSTOWN AVE	15206	No STAR Level
9	Child Care Center	LOTS AND LOTS OF TOTS	201 S WINEBIDDLE ST	15224	STAR 2
9	Child Care Center	COMMUNITY PRESCHOOL AND NURSERY	4801 PENN AVE	15224	No STAR Level
9	Child Care Center	KIDSVILLE DAY CARE	113 S AIKEN AVE	15206	STAR 1
9	Child Care Center	YMCA OF PITTSBURGH- HOMEWOOD-BRUSHTON PRGM CTR	7140 BENNETT ST	15208	STAR 1
9	Child Care Center	FOR KIDS ONLY DAY CARE	6401 PENN AVE FL 2	15206	STAR 2
9	Child Care Center	EASTMINSTER CHILD CARE	250 N HIGHLAND AVE	15206	STAR 4
9	Child Care Center	SMALL STEPS FOR LITTLE WONDERS	1204 LINCOLN AVE	15206	No STAR Level
9	Child Care Center	EARLY CHILDHOOD DEV CTR PROGRAM O/T MT ARARAT COM	271 PAULSON AVE	15206	STAR 2
9	Child Care Center	BANKS LEARNING CENTER II	2320 E HILLS DR	15221	STAR 1
9	Child Care Center	BRIGHTSIDE ACADEMY EARLY CARE EDUCATION	5919 PENN AVE	15206	STAR 3

Distri ct	Provider Type	Name	Address	Zip Code	STAR Level
9	Child Care Center	MILESTONES CHILD CARE CENTER	319 S LANG AVE	15208	No STAR Level
9	Child Care Center	WALDORF SCHOOL OF PITTSBURGH	201 S WINEBIDDLE ST	15224	No STAR Level
9	Child Care Center	SHADY LANE SCHOOL	100 N BRADDOCK AVE	15208	STAR 1
9	Family Child Care Home	CARMEN L GREEN FAMILY CHILD CARE HOME	5137 ROSECREST DR	15201	No STAR Level
9	Family Child Care Home	BARBIES Lil SCHOOLHOUSE	141 KILMER ST	15221	STAR 1
9	Family Child Care Home	REGINA L BOTTOMS FAMILY CHILD CARE HOME	1503 OBERLIN ST	15206	No STAR Level
9	Family Child Care Home	BRENDA L GRAY FAMILY CHILD CARE HOME	410 ENRIGHT CT	15206	No STAR Level
9	Family Child Care Home	LATANYA CHAVIS FAMILY CHILD CARE HOME	4360 COLERIDGE ST	15201	No STAR Level
9	Family Child Care Home	BEVERLY A SMITH FAMILY CHILD CARE HOME	6118 SAINT MARIE ST	15206	No STAR Level
9	Family Child Care Home	STUBBLEFIELDS HOME DAY CARE	7310 MONTICELLO ST	15208	STAR 1
9	Family Child Care Home	SPRADLEY DAY CARE CENTER	7130 ROSS GARDEN RD	15206	No STAR Level
9	Family Child Care Home	NANS KIDS AROUND THE CLOCK LLC	7140 IDLEWILD ST	15208	No STAR Level
9	Family Child Care Home	DORIS V KEITH-CLARK FAMILY CHILD CARE	7045 KELLY ST	15208	STAR 2
9	Family Child Care Home	DORIS L GOLDSTON FAMILY CHILD CARE HOME	1237 ALBUM ST	15206	No STAR Level
9	Family Child Care Home	KAREN WRIGHT FAMILY CHILD CARE HOME	5149 DEARBORN ST	15224	No STAR Level
9	Family Child Care Home	SHARON C THOMPSON FAMILY CHILD CARE HOME	417 SELMA ST	15206	No STAR Level
9	Family Child Care Home	FUN WITH YUMZ CHILDCARE	5455 KINCAID ST	15206	No STAR Level
9	Family Child Care Home	JONES DAYCARE	2503 PARK HILL DR	15221	No STAR Level
9	Family Child Care Home	CHARMAINE B DUNBAR FAMILY CHILD CARE HOME	6826 UPLAND ST	15208	No STAR Level
9	Family Child Care Home	BALLARDS FAMILY DAYCARE	127 N MILLVALE AVE	15224	No STAR Level
9	Family Child Care Home	RUTH WRIGHT FAMILY CHILD CARE HOME	110 N MILLVALE AVE	15224	STAR 1
9	Family Child Care Home	LINDA LAWSONS DAYCARE	6618 BRAINARD ST	15206	No STAR Level
9	Family Child Care Home	JANINEE WILLIAMS HOME CARE	527 PAULSON AVE	15206	STAR 1
9	Family Child Care Home	CHARLOTTE ONYUNDO DAYCARE	5093 ROSECREST PL	15201	No STAR Level
9	Family Child Care Home	JEANNA S DAVID FAMILY CHILD CARE HOME	7224 UPLAND ST	15208	No STAR Level
9	Family Child Care Home	BRITTINI WRIGHT FAMILY CHILD CARE HOME	4210 COLERIDGE ST	15201	STAR 1

Distri ct	Provider Type	Name	Address	Zip Code	STAR Level
9	Family Child Care Home	DOLLYS NON-TRADITIONAL CHILDCARE	307 N EVALINE ST	15224	No STAR Level
9	Family Child Care Home	EUGENIA M JACKSON FAMILY CHILD CARE HOME	7113 MOUNT VERNON ST	15208	No STAR Level
9	Group Child Care Home	DEVORE M HART GROUP DAY CARE HOME	7209 MOUNT VERNON ST	15208	STAR 1
9	Group Child Care Home	RIGHTEOUS BEGINNINGS LEARNING CENTER	7712 HAMILTON AVE	15208	STAR 1
9	Group Child Care Home	THE DEAKINGS DAYCARE	6950 LEMINGTON AVE	15206	No STAR Level
9	Group Child Care Home	SABRINA WAAJIDS CHILD CARE	5453 KINCAID ST	15206	STAR 3
9	Child Care Center	RODMAN STREET MISSIONARY BAPTIST CHILD CENTER	6111 RODMAN ST	15206	STAR 3

Appendix 3: Child Raising Vulnerability Index

Council District	Census Tract	Social		Education		Economic			Wealth		Index Count
		Percent of Single Parents	Percent Disconnected 16-19 Year Olds	Percent of Population Older than 25 with less than HS Degree	Percent of Population 25 and over with at least a college degree	Percent of Households with Wage Incomes	Percent of Children Living in Poverty	Percent of Owner Occupied Housing	Percent Household with Interest, Rent or Dividend Income	Percent of Heads of Households Receiving Public Assistance	
1	2704	No	Yes	Yes	No	No	No	No	Yes	No	3
1	2708	No	Yes	No	No	No	No	No	No	No	1
1	2715	No	Yes	Yes	No	No	Yes	No	Yes	Yes	5
1	2620	Yes	No	Yes	No	Yes	Yes	No	No	Yes	5
1	2703	Yes	No	Yes	No	No	Yes	No	No	Yes	4
1	5632	Yes	No	Yes	No	No	Yes	Yes	No	No	4
1	2612	No	Yes	No	No	No	No	No	No	No	1
1	2206	No	No	No	No	No	No	Yes	No	No	1
1	2406	No	No	No	No	No	Yes	No	No	No	1
1	2412	Yes	No	Yes	No	No	No	No	Yes	No	3
1	2509	Yes	Yes	No	No	No	Yes	No	Yes	No	4
1	2701	No	No	No	No	No	No	No	No	No	0
1	2602	Yes	No	No	No	No	No	No	No	No	1
1	2607	No	No	No	No	No	No	No	No	No	0
1	2609	Yes	No	Yes	Yes	No	Yes	Yes	Yes	Yes	7
1	9804	No	No	No	No	No	No	Yes	Yes	No	2
1	5627	No	No	No	No	No	Yes	Yes	No	No	2
1	9812	No	No	No	No	No	No	Yes	Yes	No	2
1	9809	No	No	Yes	Yes	No	No	Yes	Yes	No	4
2	2814	Yes	Yes	Yes	No	No	Yes	No	No	Yes	5
2	2815	No	No	Yes	No	No	No	No	No	No	1
2	5625	Yes	No	Yes	No	No	Yes	No	Yes	Yes	5
2	1903	No	No	No	No	No	No	No	No	No	0
2	5631	No	No	No	No	No	No	No	No	No	0
2	5626	No	Yes	Yes	Yes	No	No	No	No	Yes	4
2	5628	No	No	No	No	No	No	No	No	No	0
2	5630	No	No	No	No	No	No	No	No	No	0
2	2022	Yes	No	No	No	No	No	No	No	No	1

Council District	Census Tract	Social		Education		Economic			Wealth		Index Count
		Percent of Single Parents	Percent Disconnected 16-19 Year Olds	Percent of Population Older than 25 with less than HS Degree	Percent of Population 25 and over with at least a college degree	Percent of Households with Wage Incomes	Percent of Children Living in Poverty	Percent of Owner Occupied Housing	Percent Household with Interest, Rent or Dividend Income	Percent of Heads of Households Receiving Public Assistance	
2	1911	No	No	No	No	No	No	No	No	No	0
2	2023	No	No	No	No	No	No	No	No	No	0
2	1914	No	No	No	No	No	No	Yes	No	No	1
2	9807	No	No	No	No	No	No	Yes	No	No	1
3	3001	No	No	Yes	No	No	Yes	No	No	Yes	3
3	1608	Yes	No	Yes	No	No	Yes	No	No	No	3
3	1609	No	No	No	No	No	No	Yes	No	No	1
3	5616	Yes	No	Yes	No	Yes	Yes	No	No	Yes	5
3	5617	Yes	No	Yes	No	No	Yes	No	No	Yes	4
3	1702	No	No	No	No	No	No	No	No	No	0
3	406	No	No	No	No	No	Yes	Yes	No	No	2
3	409	No	Yes	No	No	No	No	No	No	No	1
3	1803	No	No	Yes	No	No	No	No	Yes	Yes	3
3	1807	No	No	No	No	No	Yes	No	No	Yes	2
3	1706	Yes	No	Yes	No	No	Yes	No	No	No	3
3	405	Yes	No	Yes	No	No	No	Yes	Yes	No	4
4	2902	No	No	Yes	No	No	No	No	No	No	1
4	3206	No	No	No	No	No	No	No	No	No	0
4	5624	Yes	No	Yes	No	No	No	No	No	No	2
4	3207	No	No	No	No	No	No	No	No	No	0
4	2901	No	Yes	No	No	No	No	No	No	Yes	2
4	3204	No	Yes	No	No	No	No	No	No	No	1
4	1919	No	No	No	No	No	No	No	No	No	0
4	1918	No	Yes	No	No	No	No	No	No	No	1
4	1920	No	No	No	No	No	No	No	No	No	0
4	1915	No	No	No	No	No	No	No	No	No	0
4	1916	No	Yes	No	No	No	Yes	No	No	Yes	3
4	2904	No	No	Yes	No	No	No	No	No	No	1
4	1917	No	No	No	No	No	No	No	No	No	0

Council District	Census Tract	Social		Education		Economic			Wealth		Index Count
		Percent of Single Parents	Percent Disconnected 16-19 Year Olds	Percent of Population Older than 25 with less than HS Degree	Percent of Population 25 and over with at least a college degree	Percent of Households with Wage Incomes	Percent of Children Living in Poverty	Percent of Owner Occupied Housing	Percent Household with Interest, Rent or Dividend Income	Percent of Heads of Households Receiving Public Assistance	
5	3103	No	No	No	No	No	No	No	No	No	0
5	4825	No	No	No	No	No	No	No	No	No	0
5	5154.01	No	No	No	No	No	No	No	No	No	0
5	5629	No	No	Yes	No	No	Yes	No	No	Yes	3
5	1408	No	No	No	No	No	No	No	No	No	0
5	1410	No	No	No	No	No	No	No	No	No	0
5	1413	No	No	No	No	No	No	Yes	No	No	1
5	1516	No	No	No	No	No	No	No	No	No	0
5	1517	No	No	No	No	No	No	No	No	No	0
5	1411	No	No	No	No	No	No	No	No	No	0
5	5623	No	Yes	Yes	No	No	No	Yes	Yes	No	4
5	3102	No	No	No	No	No	No	No	No	No	0
5	1414	No	No	No	No	No	No	No	No	No	0
5	9805	No	No	Yes	No	No	No	No	Yes	Yes	3
5	9803	No	No	No	Yes	No	No	No	No	No	1
6	2615	Yes	No	No	Yes	No	No	No	Yes	No	3
6	5620	No	No	No	No	No	No	Yes	No	No	1
6	501	Yes	Yes	No	No	Yes	No	No	Yes	No	4
6	2614	Yes	No	Yes	No	No	Yes	No	Yes	No	4
6	201	Yes	Yes	No	No	No	No	Yes	No	No	3
6	2503	Yes	No	No	No	No	Yes	No	No	No	2
6	2507	Yes	No	No	Yes	Yes	Yes	No	No	Yes	5
6	305	Yes	No	Yes	No	Yes	Yes	Yes	Yes	Yes	7
6	402	Yes	No	No	No	No	No	No	Yes	No	2
6	506	Yes	No	No	No	No	No	No	No	No	1
6	509	Yes	No	No	No	Yes	No	Yes	Yes	No	4
6	510	Yes	No	Yes	No	Yes	Yes	Yes	Yes	No	6
6	511	Yes	No	No	No	No	Yes	Yes	Yes	Yes	5
6	2107	Yes	Yes	Yes	No	No	No	No	Yes	No	4

Council District	Census Tract	Social		Education		Economic			Wealth		Index Count
		Percent of Single Parents	Percent Disconnected 16-19 Year Olds	Percent of Population Older than 25 with less than HS Degree	Percent of Population 25 and over with at least a college degree	Percent of Households with Wage Incomes	Percent of Children Living in Poverty	Percent of Owner Occupied Housing	Percent Household with Interest, Rent or Dividend Income	Percent of Heads of Households Receiving Public Assistance	
6	103	Yes	No	No	No	No	Yes	Yes	No	No	3
6	9808	No	No	No	No	No	No	Yes	Yes	No	2
6	9806	No	No	No	No	No	No	Yes	Yes	No	2
7	9801	No	No	No	No	No	No	Yes	Yes	No	2
7	807	No	Yes	No	No	No	No	Yes	No	No	2
7	901	No	No	Yes	No	No	Yes	No	Yes	No	3
7	1014	No	Yes	No	No	No	No	No	No	No	1
7	203	No	No	No	No	No	No	Yes	No	No	1
7	1106	No	No	No	No	No	No	No	No	No	0
7	1018	No	No	No	No	No	No	No	No	No	0
7	1102	No	No	No	No	No	No	No	No	No	0
7	802	No	No	Yes	No	No	No	No	No	No	1
7	804	Yes	No	No	No	No	No	Yes	No	No	2
7	809	No	Yes	No	No	No	No	Yes	No	No	2
7	806	No	No	No	No	No	No	Yes	No	No	1
7	605	No	No	No	No	No	No	No	No	No	0
7	902	No	No	No	No	No	No	No	No	No	0
7	903	Yes	No	No	No	No	Yes	No	No	No	2
7	1011	No	No	No	No	No	No	No	No	No	0
7	603	Yes	Yes	No	No	No	Yes	Yes	Yes	No	5
7	9810	No	No	No	Yes	No	No	No	Yes	No	2
8	706	No	No	No	No	No	No	Yes	No	No	1
8	1403	No	No	No	No	No	No	No	No	No	0
8	1404	No	No	No	No	No	No	No	No	No	0
8	404	No	No	No	No	Yes	No	No	No	No	1
8	703	No	No	No	No	No	No	Yes	No	No	1
8	705	No	No	No	No	No	No	Yes	No	No	1
8	708	No	Yes	No	No	No	No	Yes	No	No	2
8	1401	No	No	No	No	No	No	No	No	No	0

Council District	Census Tract	Social		Education		Economic			Wealth		Index Count
		Percent of Single Parents	Percent Disconnected 16-19 Year Olds	Percent of Population Older than 25 with less than HS Degree	Percent of Population 25 and over with at least a college degree	Percent of Households with Wage Incomes	Percent of Children Living in Poverty	Percent of Owner Occupied Housing	Percent Household with Interest, Rent or Dividend Income	Percent of Heads of Households Receiving Public Assistance	
8	1402	No	No	No	No	No	No	Yes	No	No	1
8	709	No	Yes	No	No	No	No	Yes	No	No	2
8	9822	No	No	No	No	No	No	Yes	Yes	No	2
9	9800	No	No	No	No	No	No	Yes	Yes	No	2
9	9818	No	No	Yes	Yes	No	No	Yes	Yes	No	4
9	1208	Yes	No	Yes	No	No	No	No	Yes	No	3
9	9811	No	No	No	No	No	No	Yes	Yes	No	2
9	5619	Yes	No	No	No	No	No	No	Yes	No	2
9	1405	Yes	No	No	No	No	Yes	No	No	No	2
9	1115	Yes	No	Yes	No	Yes	No	Yes	No	No	4
9	1406	No	No	No	No	No	No	No	No	No	0
9	1016	Yes	No	No	No	No	Yes	No	Yes	No	3
9	1017	No	No	Yes	No	No	No	No	No	No	1
9	1302	Yes	No	No	No	No	Yes	No	Yes	Yes	4
9	1303	Yes	No	No	No	No	No	No	Yes	No	2
9	1304	No	No	Yes	No	Yes	No	No	No	No	2
9	1306	Yes	No	No	No	No	Yes	No	Yes	Yes	4
9	1301	Yes	Yes	No	No	Yes	Yes	No	Yes	Yes	6
9	1005	Yes	No	No	No	No	No	No	No	No	1
9	1113	Yes	No	Yes	No	No	No	Yes	Yes	No	4
9	1114	Yes	Yes	Yes	No	No	Yes	Yes	Yes	No	6
9	1203	Yes	No	No	No	No	No	No	No	Yes	2
9	1204	No	No	No	No	No	Yes	No	Yes	Yes	3
9	1207	Yes	No	Yes	No	No	Yes	Yes	Yes	No	5

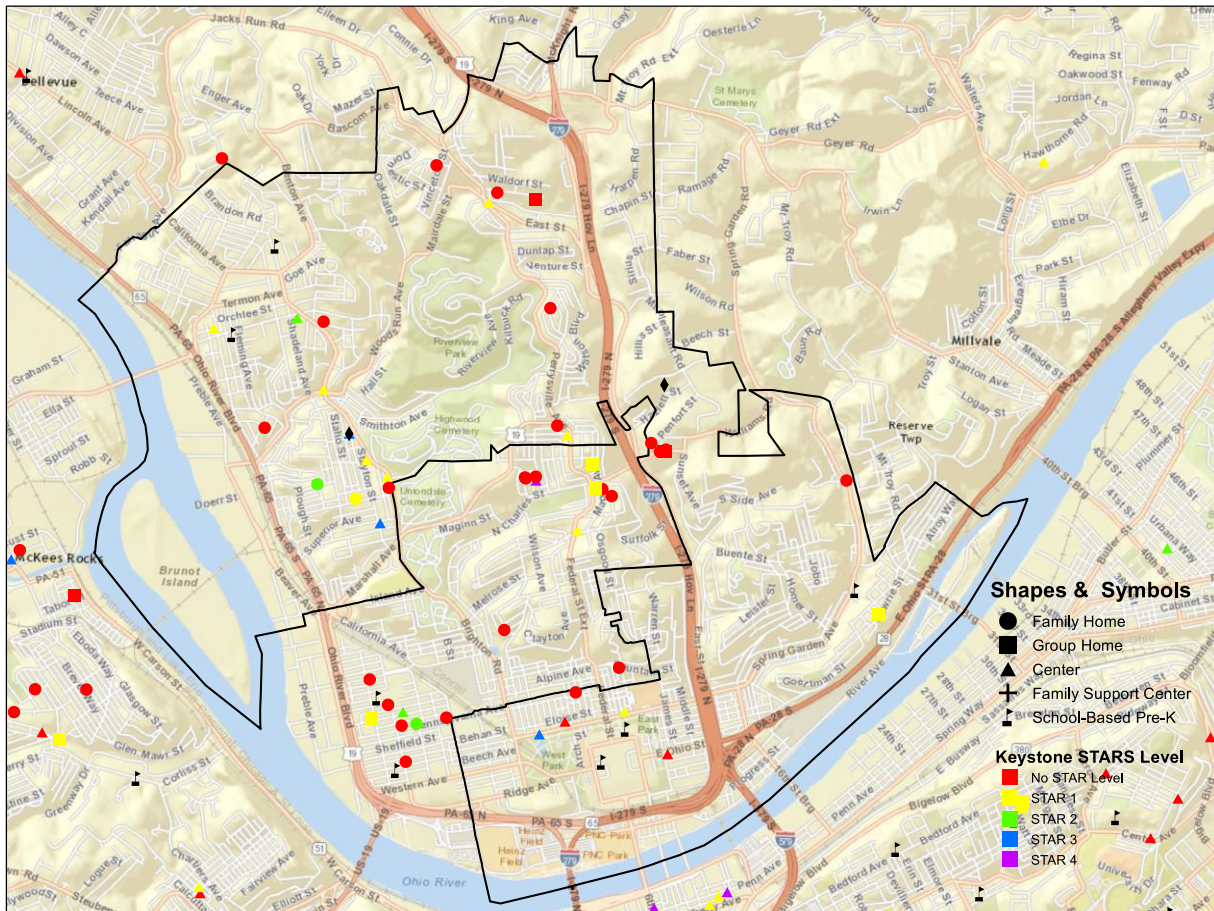
Appendix 4: City Council District Profiles

City Council District 1

Councilwoman Harris

Population: 32,803
Population 0-5: 2,322
Percentage of Population 0-5: 6.5%

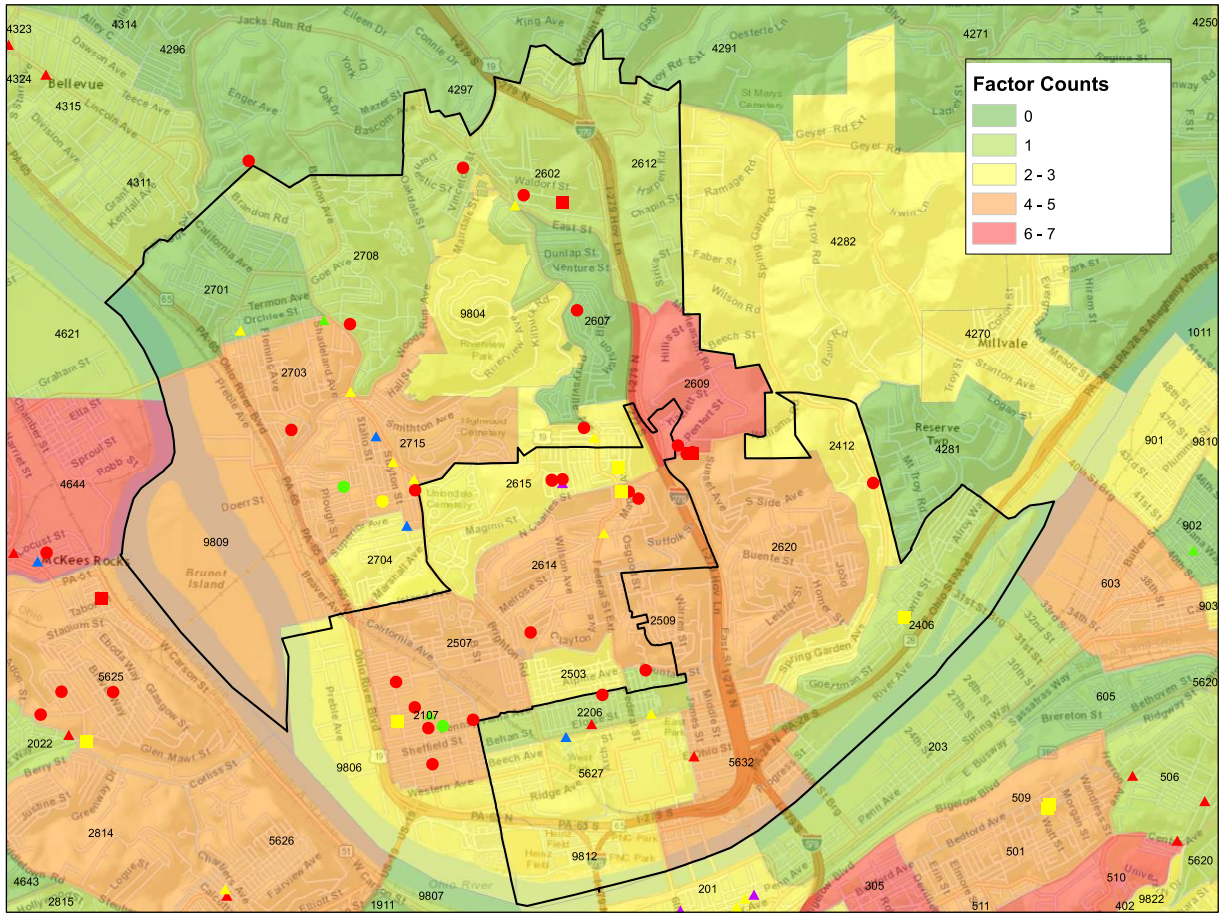
District 1 Child Care Providers



Child Care Provider by Provider Type and Keystone STARS Level

Row Labels	No STAR Level	STAR 1	STAR 2	STAR 3	STAR 4	Total
Child Care Center	2	7	1	3	0	13
Family Child Care Home	12	1	1	0	0	14
Group Child Care Home	3	1	0	0	0	4
Total	17	9	2	3	0	31

Child Raising Vulnerability Index and Child Care Providers



Child Raising Vulnerability Index by Census Tract

Census Tract	Total Poverty Rate	Social		Education		Economic			Wealth		Index Count
		Percent of Single Parents	Percent Disconnected 16-19 Year Olds	Percent of Population Older than 25 with less than HS Degree	Percent of Population 25 and over with at least a college degree	Percent of Households with Wage Incomes	Percent of Children Living in Poverty	Percent of Owner Occupied Housing	Percent Household with Interest, Rent or Dividend Income	Percent of Heads of Households Receiving Public Assistance	
2704	25.4	No	Yes	Yes	No	No	No	No	Yes	No	3
2708	13.7	No	Yes	No	No	No	No	No	No	No	1
2715	29	No	Yes	Yes	No	No	Yes	No	Yes	Yes	5
2620	25.9	Yes	No	Yes	No	Yes	Yes	No	No	Yes	5
2703	27.6	Yes	No	Yes	No	No	Yes	No	No	Yes	4
5632	34	Yes	No	Yes	No	No	Yes	Yes	No	No	4

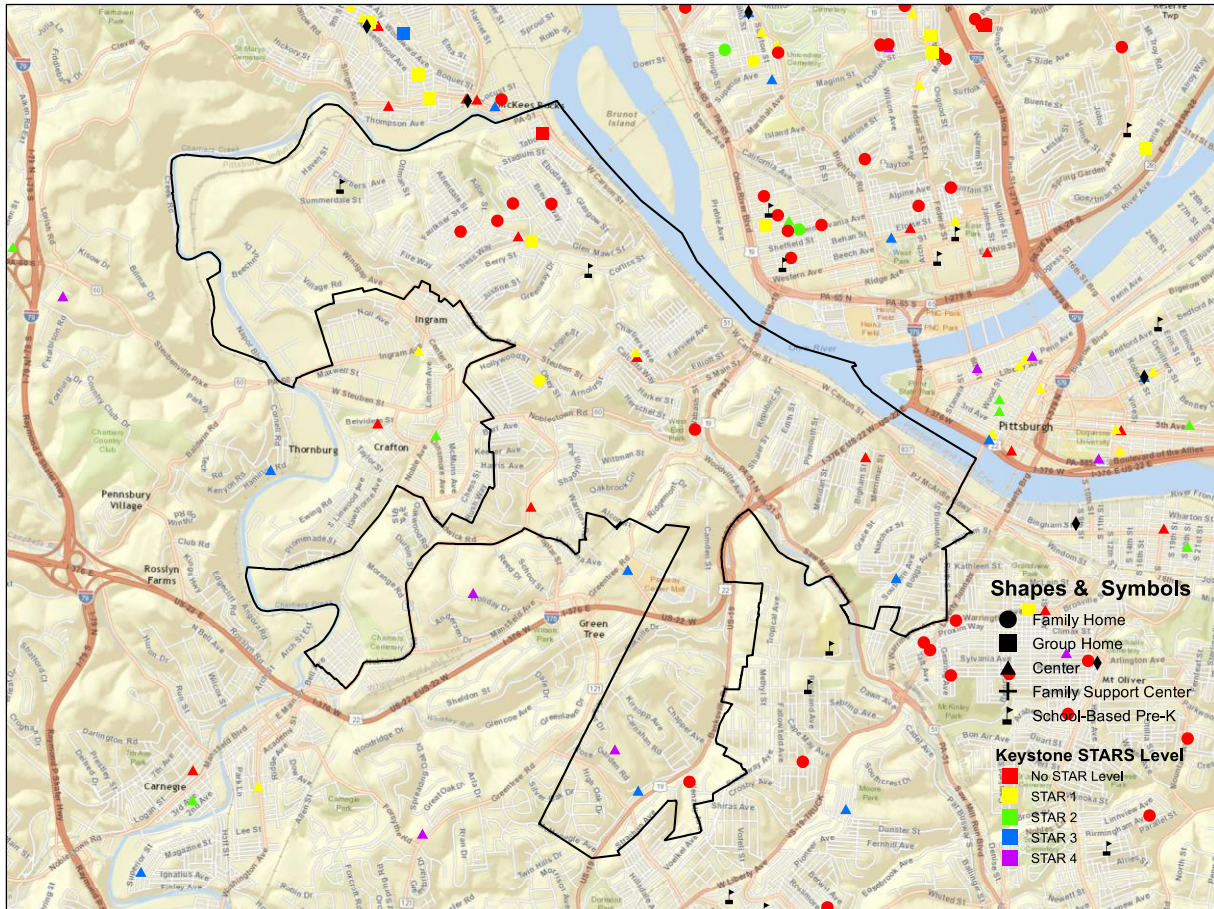
Census Tract	Total Poverty Rate	Social		Education		Economic			Wealth		Index Count
		Percent of Single Parents	Percent Disconnected 16-19 Year Olds	Percent of Population Older than 25 with less than HS Degree	Percent of Population 25 and over with at least a college degree	Percent of Households with Wage Incomes	Percent of Children Living in Poverty	Percent of Owner Occupied Housing	Percent Household with Interest, Rent or Dividend Income	Percent of Heads of Households Receiving Public Assistance	
2612	8.1	No	Yes	No	No	No	No	No	No	No	1
2206	22.2	No	No	No	No	No	No	Yes	No	No	1
2406	19.7	No	No	No	No	No	Yes	No	No	No	1
2412	10	Yes	No	Yes	No	No	No	No	Yes	No	3
2509	30.5	Yes	Yes	No	No	No	Yes	No	Yes	No	4
2701	9.2	No	No	No	No	No	No	No	No	No	0
2602	19.9	Yes	No	No	No	No	No	No	No	No	1
2607	16.3	No	No	No	No	No	No	No	No	No	0
2609	57.8	Yes	No	Yes	Yes	No	Yes	Yes	Yes	Yes	7
9804	0	No	No	No	No	No	No	Yes	Yes	No	2
5627	35.3	No	No	No	No	No	Yes	Yes	No	No	2
9812	0	No	No	No	No	No	No	Yes	Yes	No	2
9809	0	No	No	Yes	Yes	No	No	Yes	Yes	No	4

City Council District 2

Councilwoman Kail-Smith

Population: 31,372
Population 0-5: 2,028
Percentage of Population 0-5: 6.4%

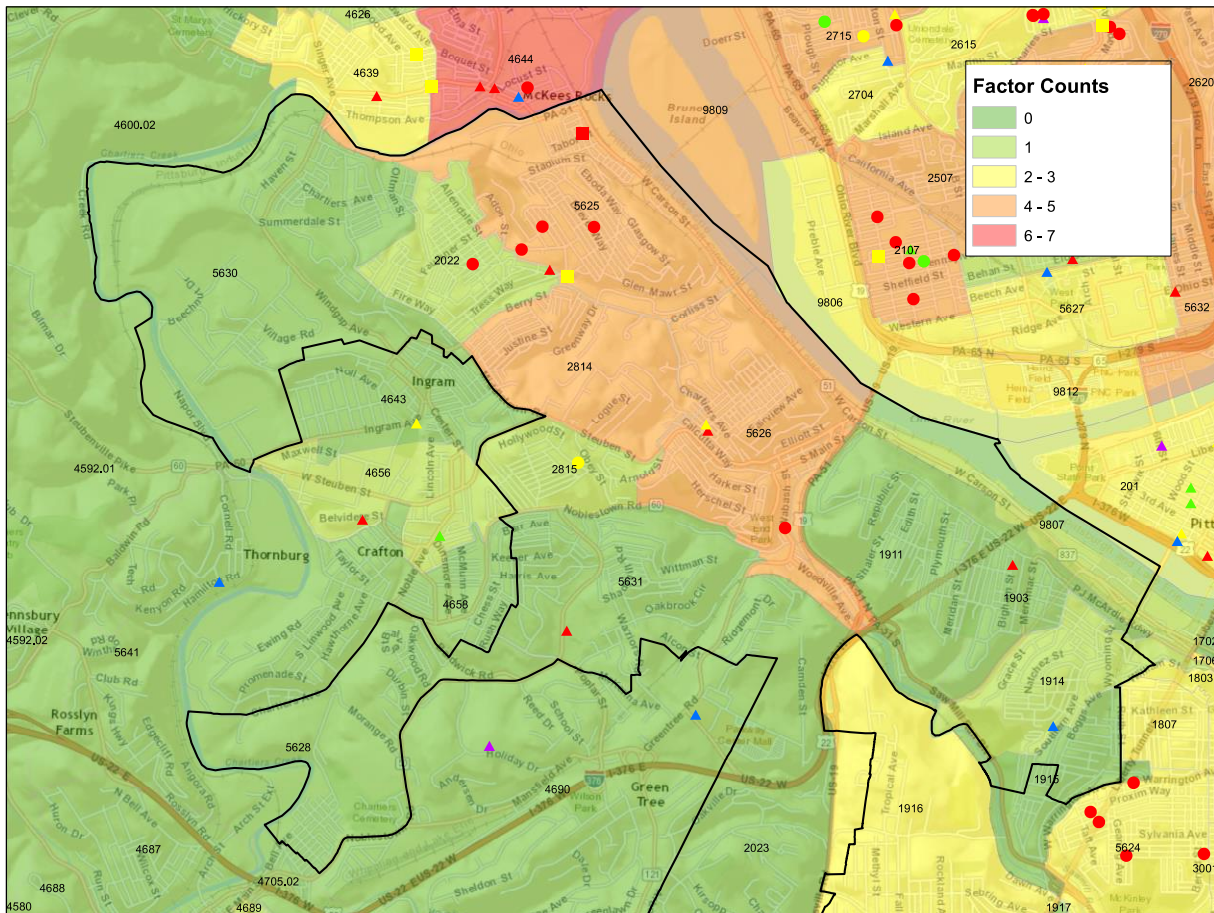
District 2 Child Care Providers



Child Care Providers by Provider Type and Keystone STARS Level

Provider Type	No STAR Level	STAR 1	STAR 2	STAR 3	STAR 4	Total
Child Care Center	4	2	0	2	1	9
Family Child Care Home	6	1	0	0	0	7
Group Child Care Home	1	1	0	0	0	2
Total	11	4	0	2	1	18

Child Raising Vulnerability Index and Child Care Providers



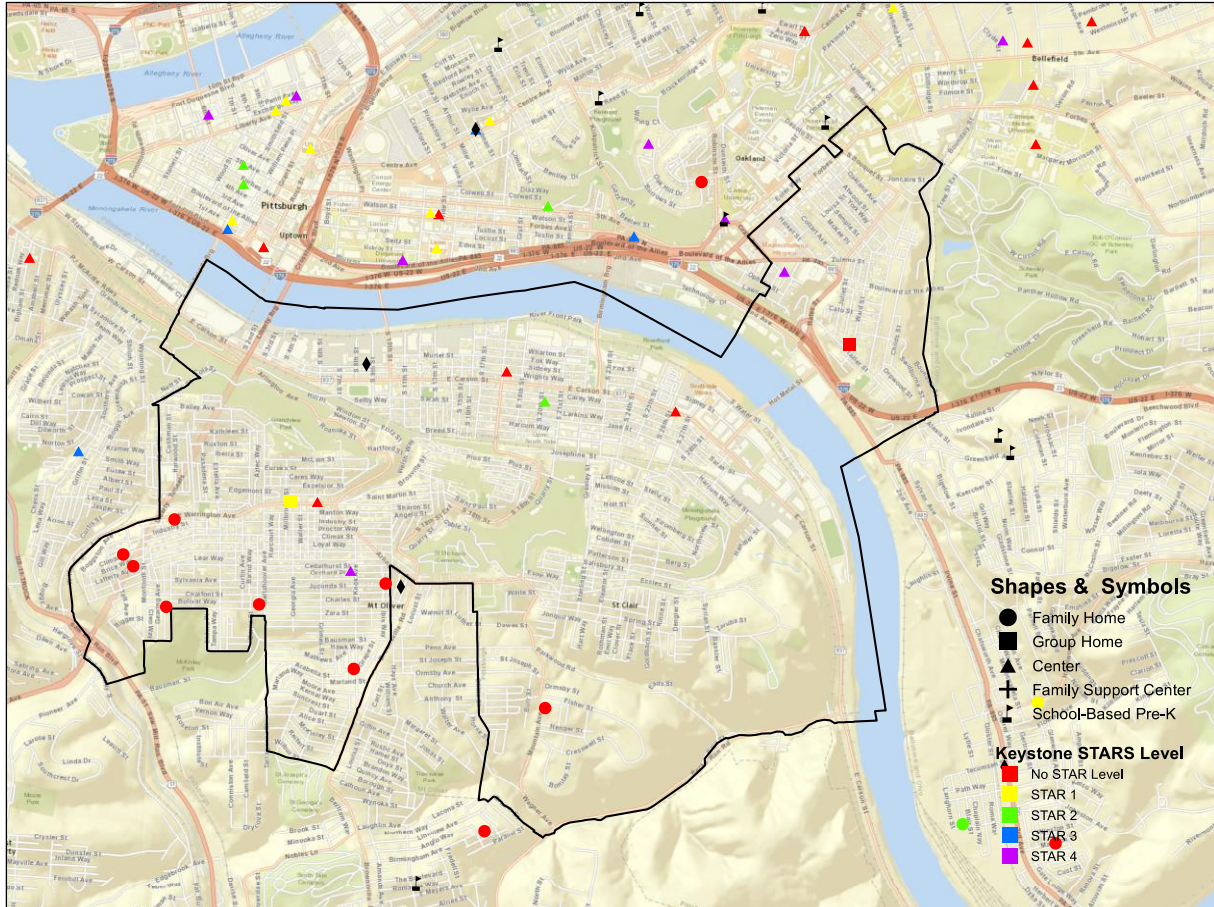
Census Tract	Total Poverty Rate	Social		Education		Economic			Wealth		Index Count
		Percent of Single Parents	Percent Disconnected 16-19 Year Olds	Percent of Population Older than 25 with less than HS Degree	Percent of Population 25 and over with at least a college degree	Percent of Households with Wage Incomes	Percent of Children Living in Poverty	Percent of Owner Occupied Housing	Percent Household with Interest, Rent or Dividend Income	Percent of Heads of Households Receiving Public Assistance	
5631	6.4	No	No	No	No	No	No	No	No	No	0
5626	17.5	No	Yes	Yes	Yes	No	No	No	No	Yes	4
5628	19	No	No	No	No	No	No	No	No	No	0
5630	12.8	No	No	No	No	No	No	No	No	No	0
2022	13.7	Yes	No	No	No	No	No	No	No	No	1
1911	17.7	No	No	No	No	No	No	No	No	No	0
2023	8.9	No	No	No	No	No	No	No	No	No	0
1914	12.9	No	No	No	No	No	No	Yes	No	No	1
9807	0	No	No	No	No	No	No	Yes	No	No	1

City Council District 3

Councilman Kraus

Population: 31,164
Population 0-5: 1,326
Percentage of Population 0-5: 4.6%

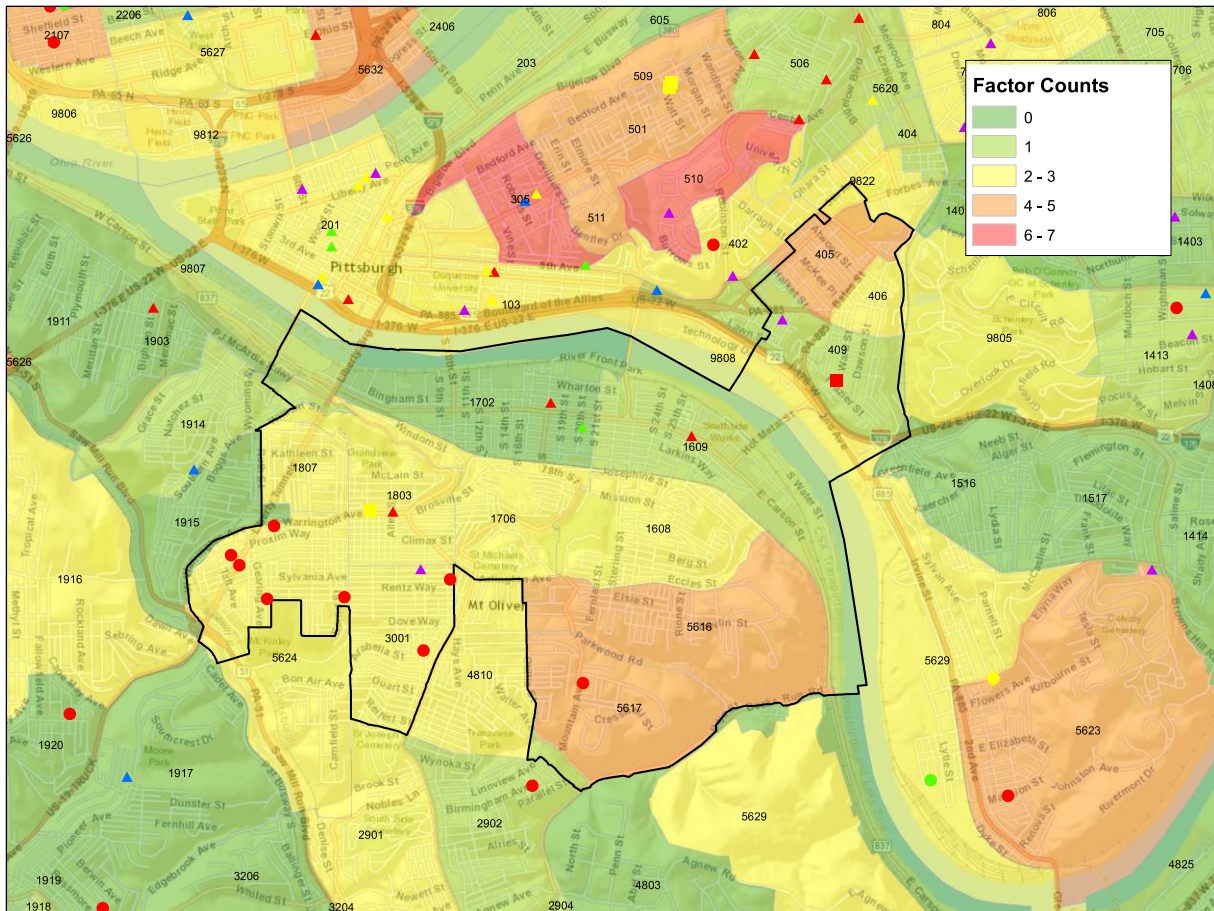
District 3 Child Care Providers



Child Care Providers by Provider Type and Keystone STARS Level

Provider Type	No STAR Level	STAR 1	STAR 2	STAR 3	STAR 4	Total
Child Care Center	3	0	1	0	2	6
Family Child Care Home	8	0	0	0	0	8
Group Child Care Home	1	1	0	0	0	2
Total	12	1	1	0	2	16

Child Raising Vulnerability Index and Child Care Providers



Child Raising Vulnerability Index by Census Tract

Census Tract	Total Poverty Rate	Social		Education		Economic			Wealth		Index Count
		Percent of Single Parents	Percent Disconnected 16-19 Year Olds	Percent of Population Older than 25 with less than HS Degree	Percent of Population 25 and over with at least a college degree	Percent of Households with Wage Incomes	Percent of Children Living in Poverty	Percent of Owner Occupied Housing	Percent Household with Interest, Rent or Dividend Income	Percent of Heads of Households Receiving Public Assistance	
3001	33.1	No	No	Yes	No	No	Yes	No	No	Yes	3
1608	29.5	Yes	No	Yes	No	No	Yes	No	No	No	3
1609	22.8	No	No	No	No	No	No	Yes	No	No	1

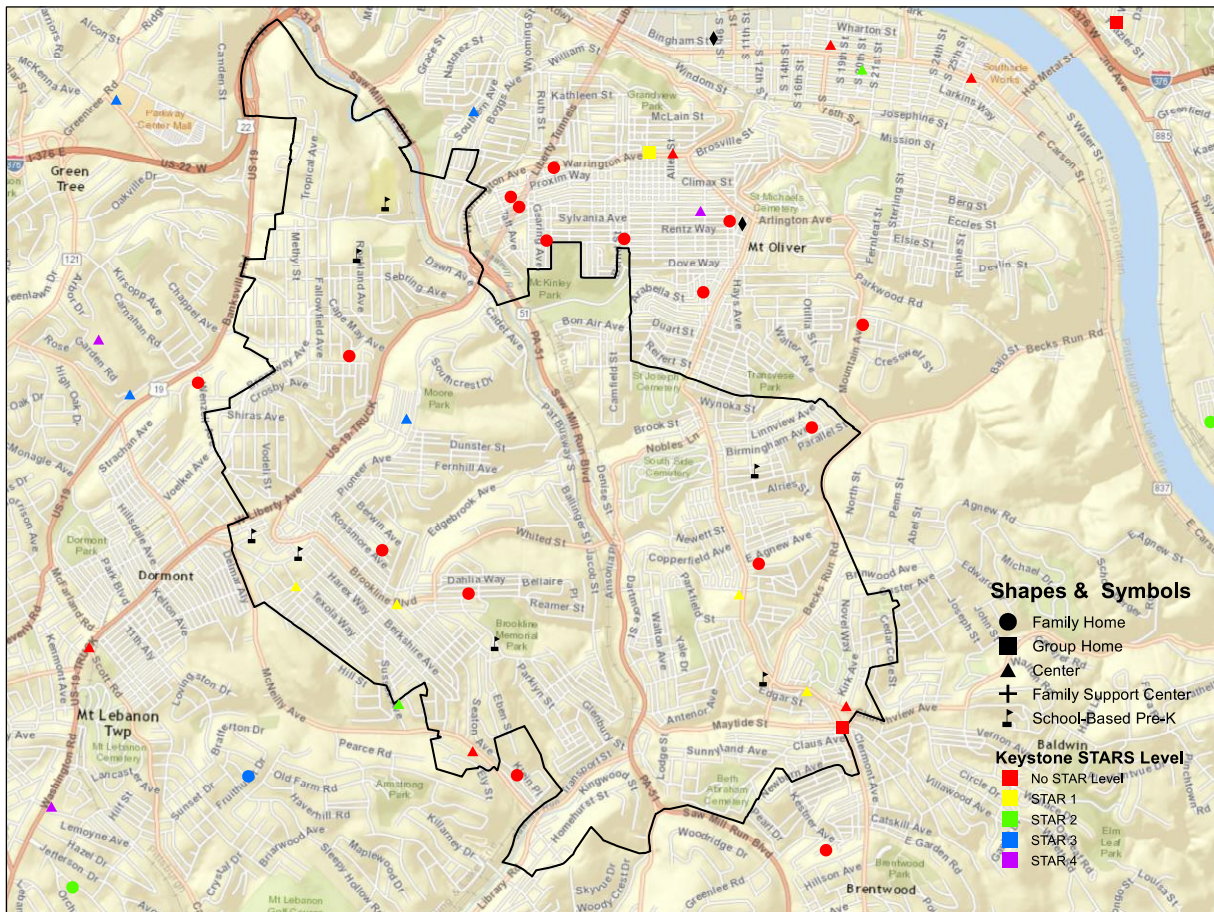
Census Tract	Total Poverty Rate	Social		Education		Economic			Wealth		Index Count
		Percent of Single Parents	Percent Disconnected 16-19 Year Olds	Percent of Population Older than 25 with less than HS Degree	Percent of Population 25 and over with at least a college degree	Percent of Households with Wage Incomes	Percent of Children Living in Poverty	Percent of Owner Occupied Housing	Percent Household with Interest, Rent or Dividend Income	Percent of Heads of Households Receiving Public Assistance	
5616	36	Yes	No	Yes	No	Yes	Yes	No	No	Yes	5
5617	46.5	Yes	No	Yes	No	No	Yes	No	No	Yes	4
1702	20.3	No	No	No	No	No	No	No	No	No	0
406	66.8	No	No	No	No	No	Yes	Yes	No	No	2
409	37.6	No	Yes	No	No	No	No	No	No	No	1
1803	26.7	No	No	Yes	No	No	No	No	Yes	Yes	3
1807	22.8	No	No	No	No	No	Yes	No	No	Yes	2
1706	33.3	Yes	No	Yes	No	No	Yes	No	No	No	3
405	66.6	Yes	No	Yes	No	No	No	Yes	Yes	No	4

City Council District 4

Councilman Rudiak

Population: 39,725
Population 0-5: 2,655
Percentage of Population 0-5: 6.6%

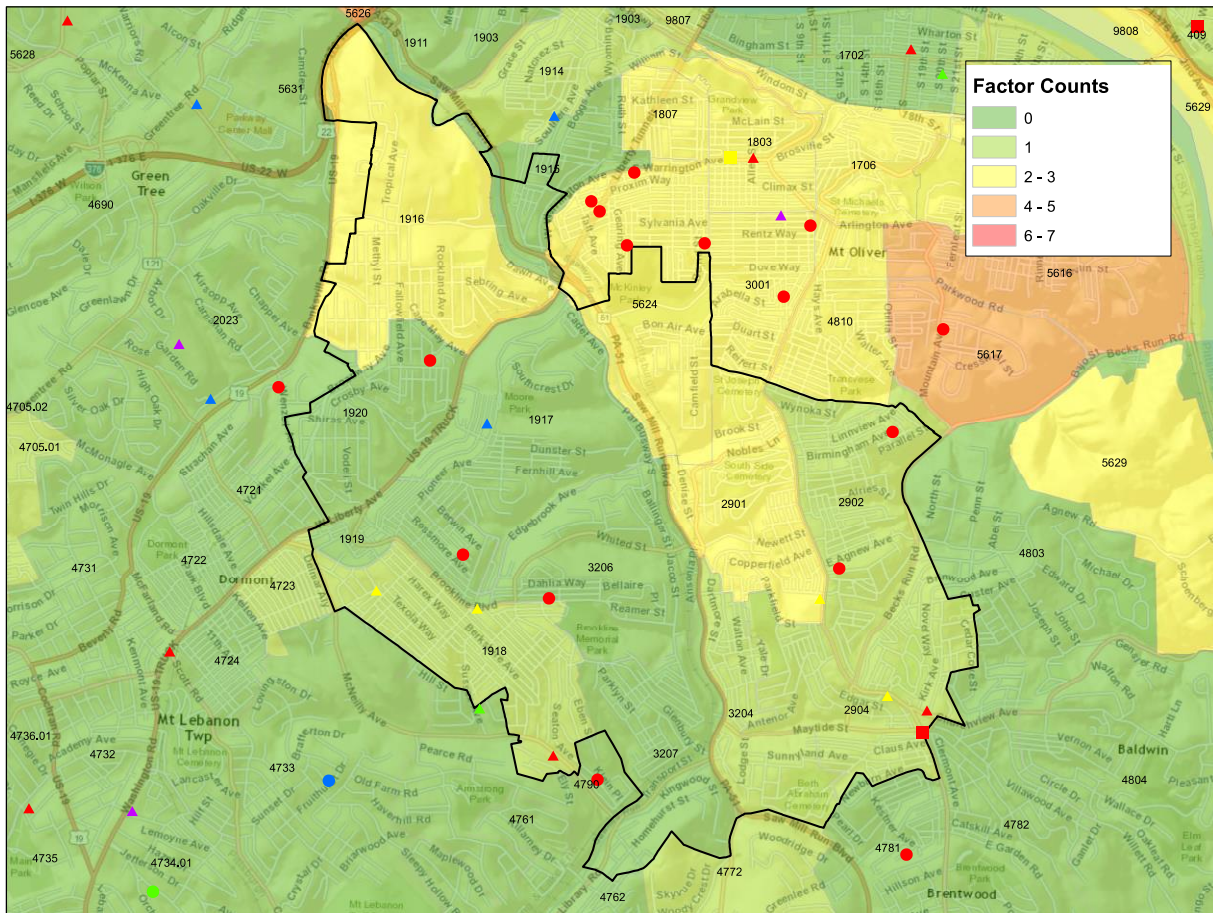
District 4 Child Care Providers



Child Care Providers by Provider Type and Keystone STARS Level

Provider Type	No STAR Level	STAR 1	STAR 2	STAR 3	STAR 4	Total
Child Care Center	2	4	1	1	0	8
Family Child Care Home	5	0	0	0	0	5
Group Child Care Home	1	0	0	0	0	1
Total	8	4	1	1	0	14

Child Raising Vulnerability Index and Child Care Providers



Child Raising Vulnerability Index by Census Tract

Census Tract	Total Poverty Rate	Social		Education		Economic			Wealth		Index Count
		Percent of Single Parents	Percent Disconnected 16-19 Year Olds	Percent of Population Older than 25 with less than HS Degree	Percent of Population 25 and over with at least a college degree	Percent of Households with Wage Incomes	Percent of Children Living in Poverty	Percent of Owner Occupied Housing	Percent Household with Interest, Rent or Dividend Income	Percent of Heads of Households Receiving Public Assistance	
2902	23.9	No	No	Yes	No	No	No	No	No	No	1
3206	14.3	No	No	No	No	No	No	No	No	No	0
5624	15.3	Yes	No	Yes	No	No	No	No	No	No	2
3207	10.8	No	No	No	No	No	No	No	No	No	0
2901	13.5	No	Yes	No	No	No	No	No	No	Yes	2

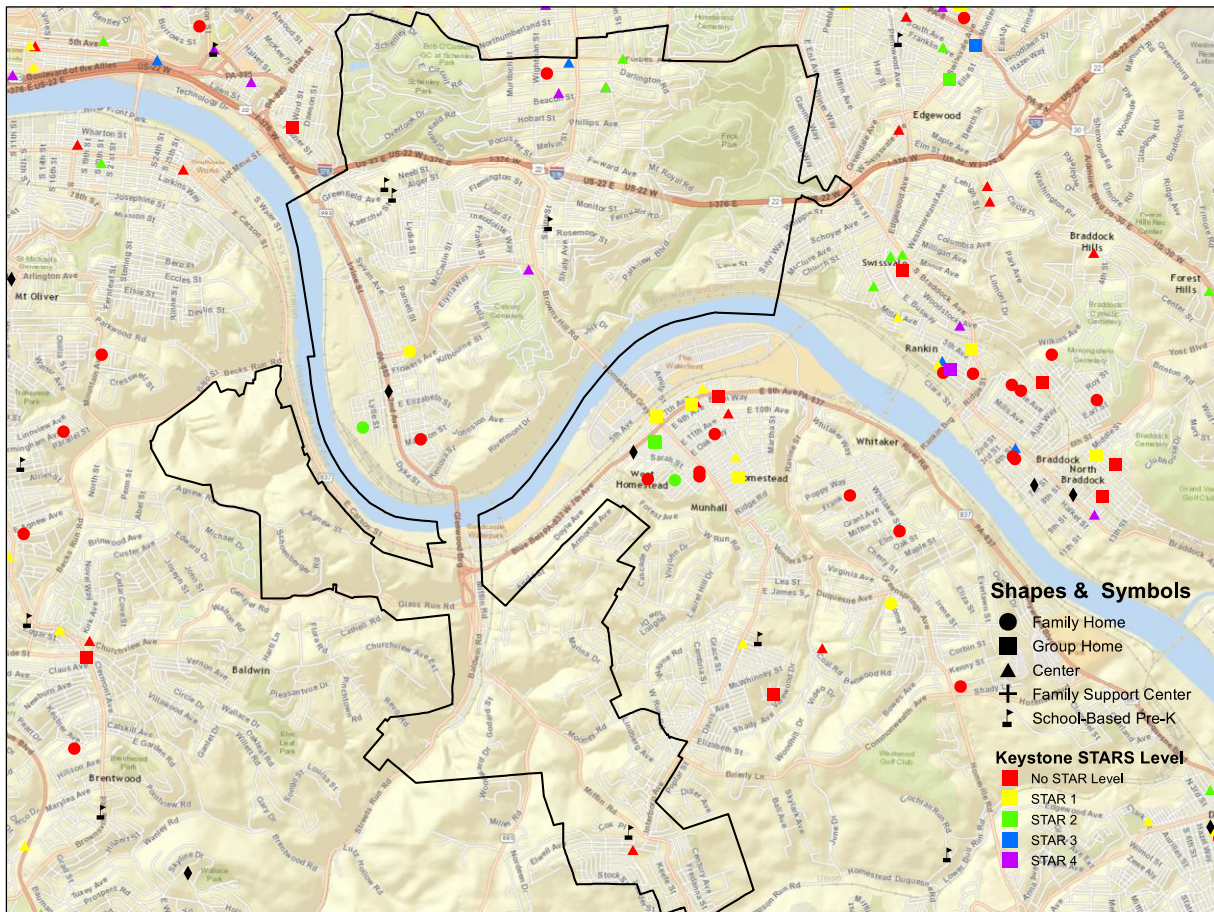
Census Tract	Total Poverty Rate	Social		Education		Economic			Wealth		Index Count
		Percent of Single Parents	Percent Disconnected 16-19 Year Olds	Percent of Population Older than 25 with less than HS Degree	Percent of Population 25 and over with at least a college degree	Percent of Households with Wage Incomes	Percent of Children Living in Poverty	Percent of Owner Occupied Housing	Percent Household with Interest, Rent or Dividend Income	Percent of Heads of Households Receiving Public Assistance	
3204	10	No	Yes	No	No	No	No	No	No	No	1
1919	10.3	No	No	No	No	No	No	No	No	No	0
1918	13.3	No	Yes	No	No	No	No	No	No	No	1
1920	18	No	No	No	No	No	No	No	No	No	0
1915	22.8	No	No	No	No	No	No	No	No	No	0
1916	26.5	No	Yes	No	No	No	Yes	No	No	Yes	3
2904	9.9	No	No	Yes	No	No	No	No	No	No	1
1917	17.1	No	No	No	No	No	No	No	No	No	0

City Council District 5

Councilman O'Connor

Population: 38,500
Population 0-5: 2,451
Percentage of Population 0-5: 6.1%

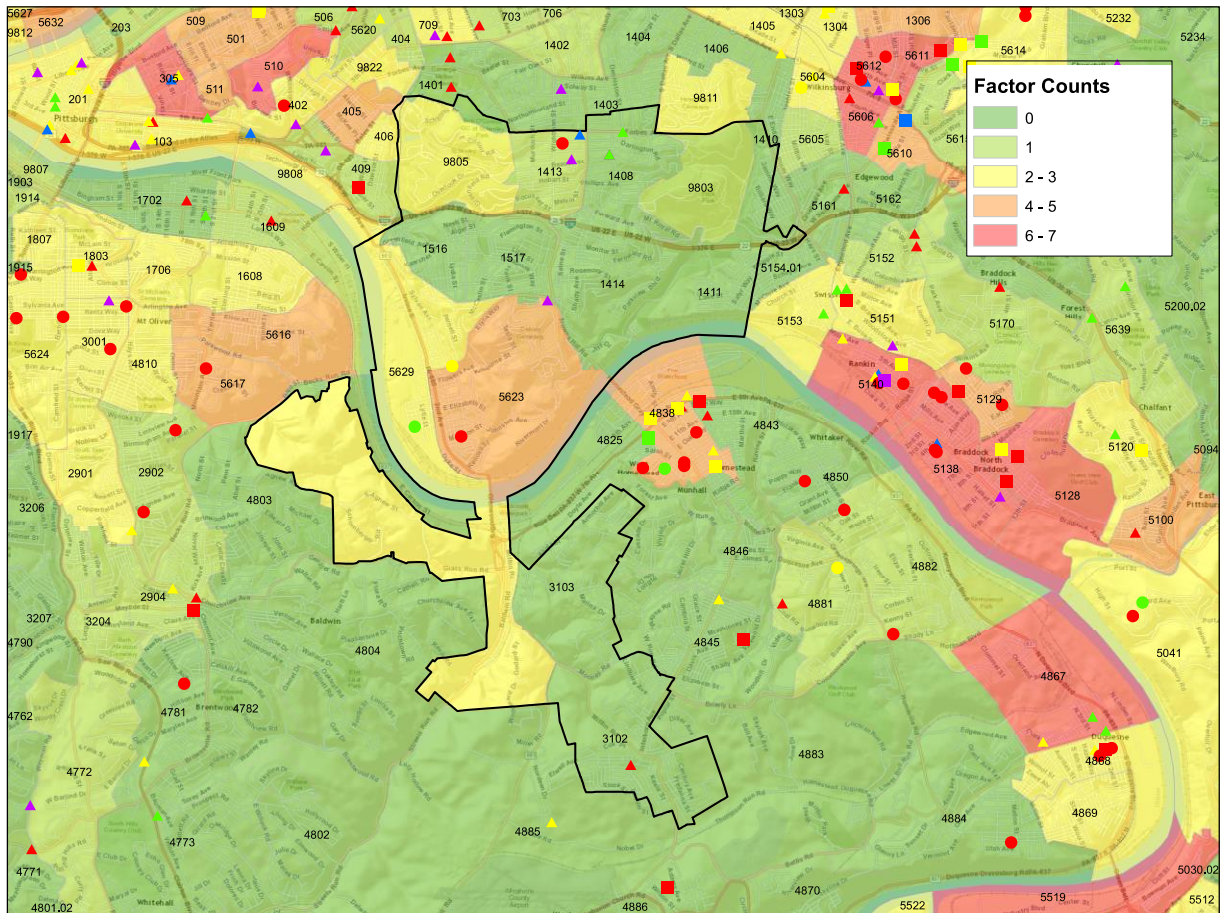
District 5 Child Care Providers



Child Care Providers by Provider Type and Keystone STARS Level

Provider Type	No STAR Level	STAR 1	STAR 2	STAR 3	STAR 4	Total
Child Care Center	1	0	2	1	3	7
Family Child Care Home	2	1	1	0	0	4
Group Child Care Home	0	0	0	0	0	0
Total	3	1	3	1	3	11

Child Raising Vulnerability Index and Child Care Providers



Child Raising Vulnerability Index by Census Tract

Census Tract	Total Poverty Rate	Social		Education		Economic			Wealth		Index Count
		Percent of Single Parents	Percent Disconnected 16-19 Year Olds	Percent of Population Older than 25 with less than HS Degree	Percent of Population 25 and over with at least a college degree	Percent of Households with Wage Incomes	Percent of Children Living in Poverty	Percent of Owner Occupied Housing	Percent Household with Interest, Rent or Dividend Income	Percent of Heads of Households Receiving Public Assistance	
3103	11.1	No	No	No	No	No	No	No	No	No	0
4825	13.9	No	No	No	No	No	No	No	No	No	0
5154.01	5.5	No	No	No	No	No	No	No	No	No	0
5629	24	No	No	Yes	No	No	Yes	No	No	Yes	3
1408	14.5	No	No	No	No	No	No	No	No	No	0

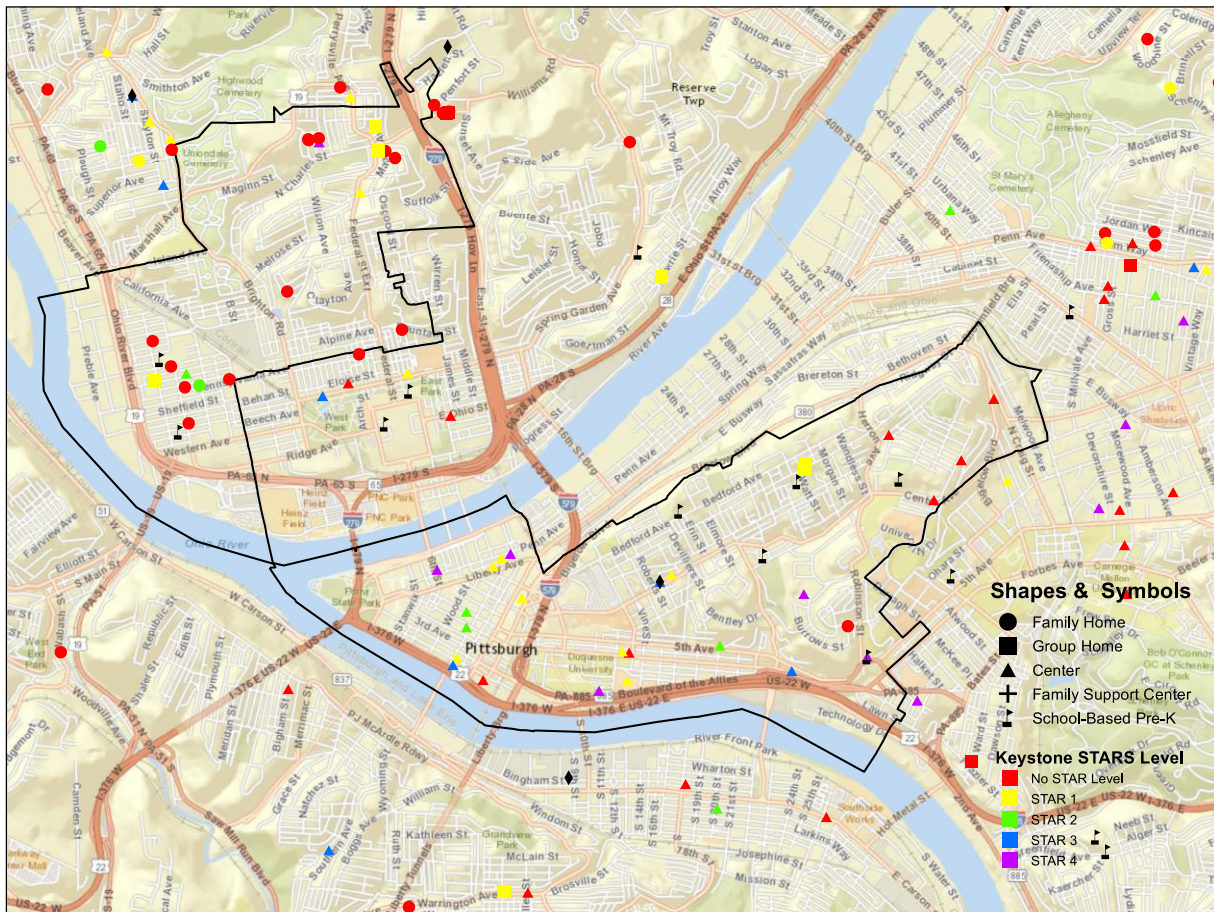
Census Tract	Total Poverty Rate	Social		Education		Economic			Wealth		Index Count
		Percent of Single Parents	Percent Disconnected 16-19 Year Olds	Percent of Population Older than 25 with less than HS Degree	Percent of Population 25 and over with at least a college degree	Percent of Households with Wage Incomes	Percent of Children Living in Poverty	Percent of Owner Occupied Housing	Percent Household with Interest, Rent or Dividend Income	Percent of Heads of Households Receiving Public Assistance	
1410	1.2	No	No	No	No	No	No	No	No	No	0
1413	16.2	No	No	No	No	No	No	Yes	No	No	1
1516	8.3	No	No	No	No	No	No	No	No	No	0
1517	9.1	No	No	No	No	No	No	No	No	No	0
1411	3.2	No	No	No	No	No	No	No	No	No	0
5623	23.8	No	Yes	Yes	No	No	No	Yes	Yes	No	4
3102	3.9	No	No	No	No	No	No	No	No	No	0
1414	13.1	No	No	No	No	No	No	No	No	No	0
9805	0	No	No	Yes	No	No	No	No	Yes	Yes	3
9803	0	No	No	No	Yes	No	No	No	No	No	1

City Council District 6

Councilman Lavelle

Population: 34,667
Population 0-5: 1,724
Percentage of Population 0-5: 6.7%

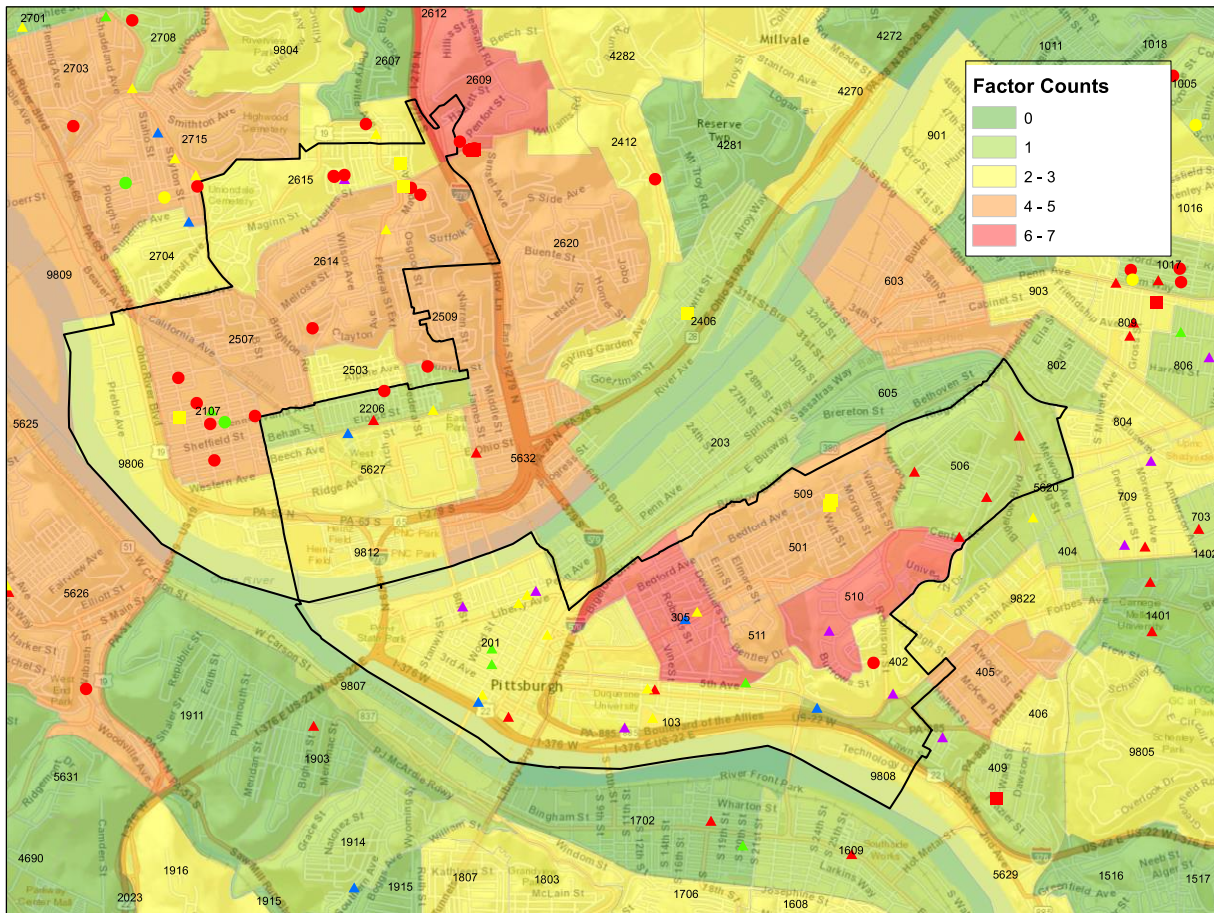
District 6 Child Care Providers



Child Care Providers by Provider Type and Keystone STARS Level

Provider Type	No STAR Level	STAR 1	STAR 2	STAR 3	STAR 4	Total
Child Care Center	6	8	4	3	6	27
Family Child Care Home	13	0	1	0	0	14
Group Child Care Home	0	5	0	0	0	5
Total	19	13	5	3	6	46

Child Raising Vulnerability Index and Child Care Providers



Child Raising Vulnerability Index by Census Tract

Census Tract	Total Poverty Rate	Social		Education		Economic			Wealth		Index Count
		Percent of Single Parents	Percent Disconnected 16-19 Year Olds	Percent of Population Older than 25 with less than HS Degree	Percent of Population 25 and over with at least a college degree	Percent of Households with Wage Incomes	Percent of Children Living in Poverty	Percent of Owner Occupied Housing	Percent Household with Interest, Rent or Dividend Income	Percent of Heads of Households Receiving Public Assistance	
2615	23.3	Yes	No	No	Yes	No	No	No	Yes	No	3
5620	34.7	No	No	No	No	No	No	Yes	No	No	1
501	28.5	Yes	Yes	No	No	Yes	No	No	Yes	No	4
2614	41.9	Yes	No	Yes	No	No	Yes	No	Yes	No	4
201	31.1	Yes	Yes	No	No	No	No	Yes	No	No	3

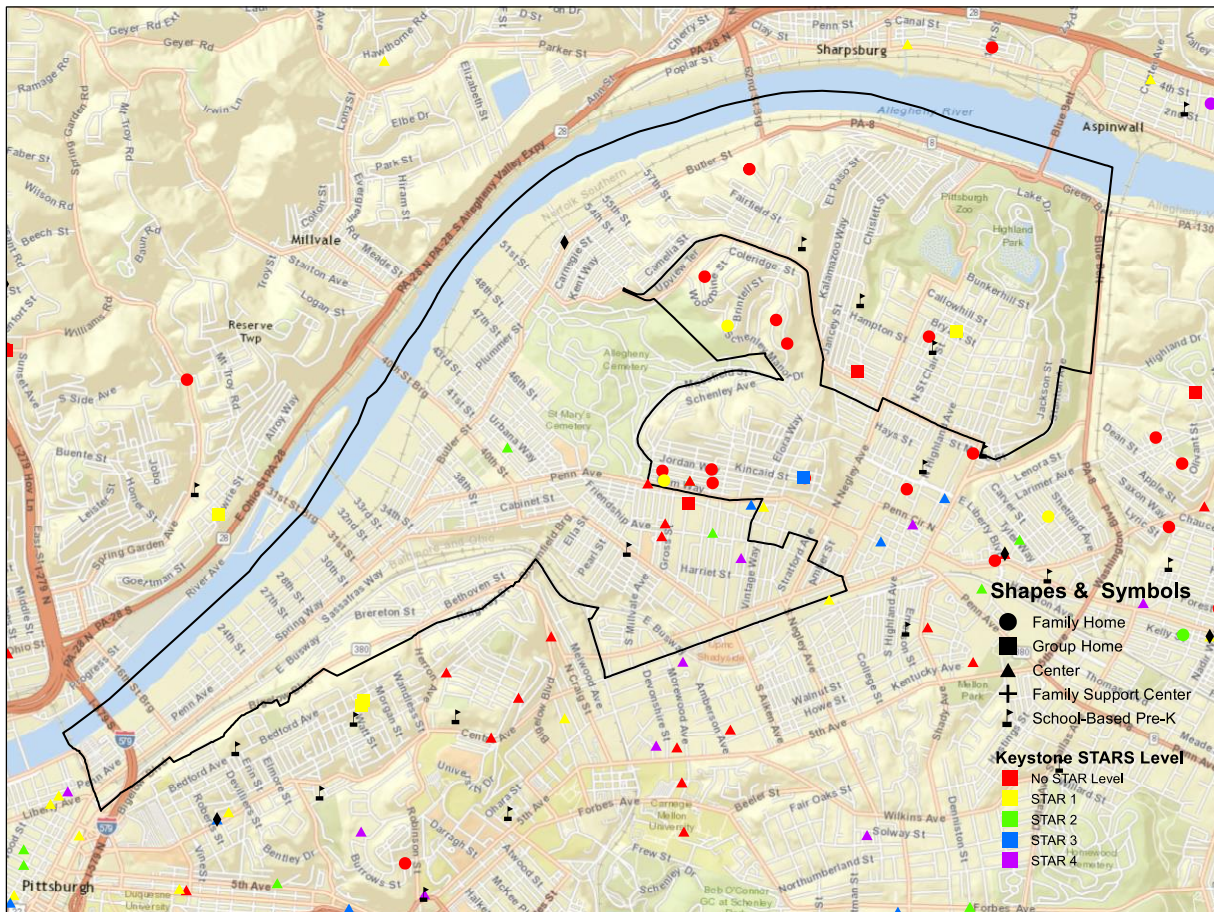
Census Tract	Total Poverty Rate	Social		Education		Economic			Wealth		Index Count
		Percent of Single Parents	Percent Disconnected 16-19 Year Olds	Percent of Population Older than 25 with less than HS Degree	Percent of Population 25 and over with at least a college degree	Percent of Households with Wage Incomes	Percent of Children Living in Poverty	Percent of Owner Occupied Housing	Percent Household with Interest, Rent or Dividend Income	Percent of Heads of Households Receiving Public Assistance	
2503	35.1	Yes	No	No	No	No	Yes	No	No	No	2
2507	39.9	Yes	No	No	Yes	Yes	Yes	No	No	Yes	5
305	53.2	Yes	No	Yes	No	Yes	Yes	Yes	Yes	Yes	7
402	33.2	Yes	No	No	No	No	No	No	Yes	No	2
506	20.8	Yes	No	No	No	No	No	No	No	No	1
509	39.6	Yes	No	No	No	Yes	No	Yes	Yes	No	4
510	46.6	Yes	No	Yes	No	Yes	Yes	Yes	Yes	No	6
511	64.2	Yes	No	No	No	No	Yes	Yes	Yes	Yes	5
2107	24.6	Yes	Yes	Yes	No	No	No	No	Yes	No	4
103	78	Yes	No	No	No	No	Yes	Yes	No	No	3
9808	0	No	No	No	No	No	No	Yes	Yes	No	2
9806	0	No	No	No	No	No	No	Yes	Yes	No	2

City Council District 7

Councilman Gross

Population: 33,872
Population 0-5: 1,863
Percentage of Population 0-5: 4.5%

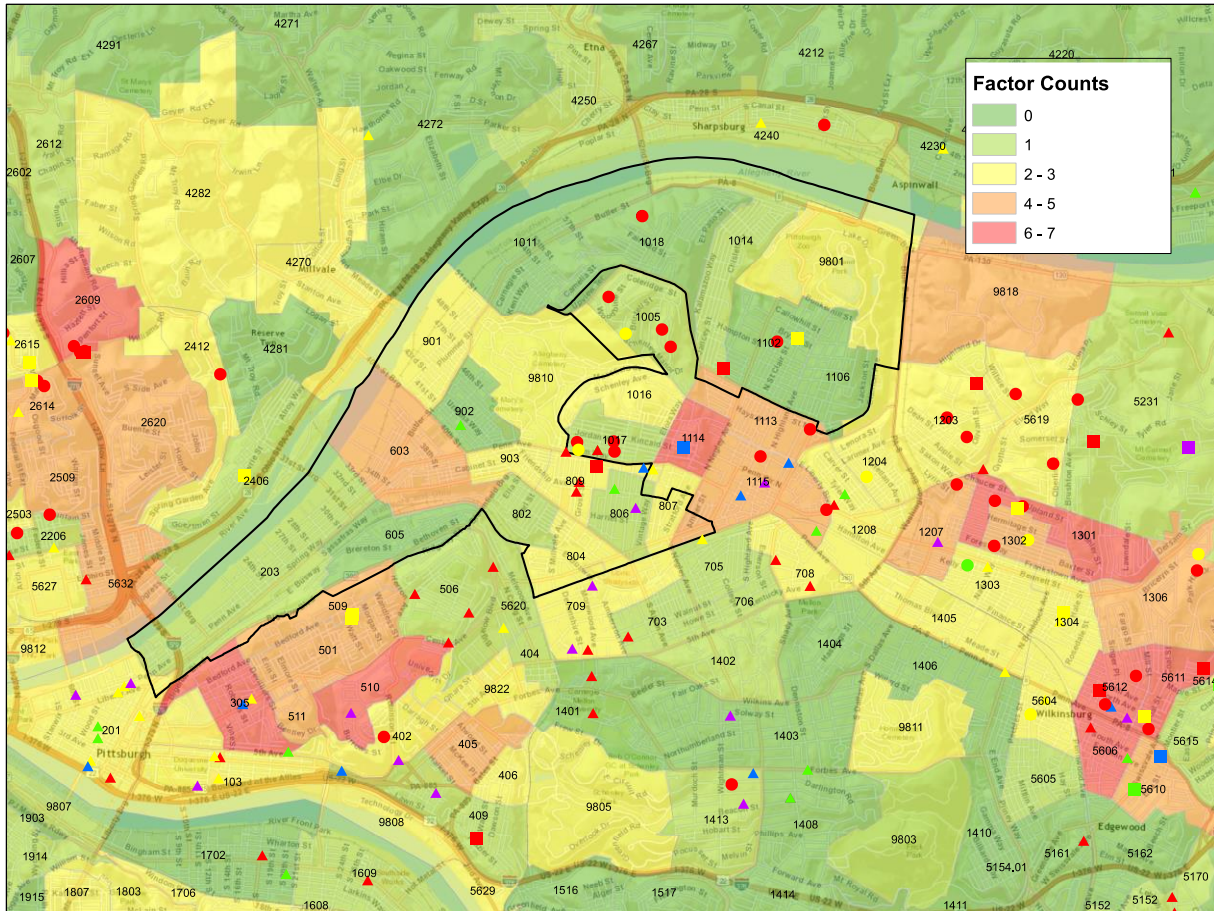
District 7 Child Care Providers



Child Care Providers by Provider Type and Keystone STARS Level

Provider Type	No STAR Level	Not participating	STAR 1	STAR 2	STAR 3	STAR 4	Total
Child Care Center	2	0	0	2	1	1	6
Family Child Care Home	1	1	0	0	0	0	2
Group Child Care Home	3	0	1	0	0	0	4
Total	6	1	1	2	1	1	12

Child Raising Vulnerability Index and Child Care Providers



Child Raising Vulnerability Index by Census Tract

Census Tract	Total Poverty Rate	Social		Education		Economic			Wealth		Index Count
		Percent of Single Parents	Percent Disconnected 16-19 Year Olds	Percent of Population Older than 25 with less than HS Degree	Percent of Population 25 and over with at least a college degree	Percent of Households with Wage Incomes	Percent of Children Living in Poverty	Percent of Owner Occupied Housing	Percent Household with Interest, Rent or Dividend Income	Percent of Heads of Households Receiving Public Assistance	
9801	0	No	No	No	No	No	No	Yes	Yes	No	2
807	19.7	No	Yes	No	No	No	No	Yes	No	No	2
901	31.6	No	No	Yes	No	No	Yes	No	Yes	No	3
1014	7.1	No	Yes	No	No	No	No	No	No	No	1

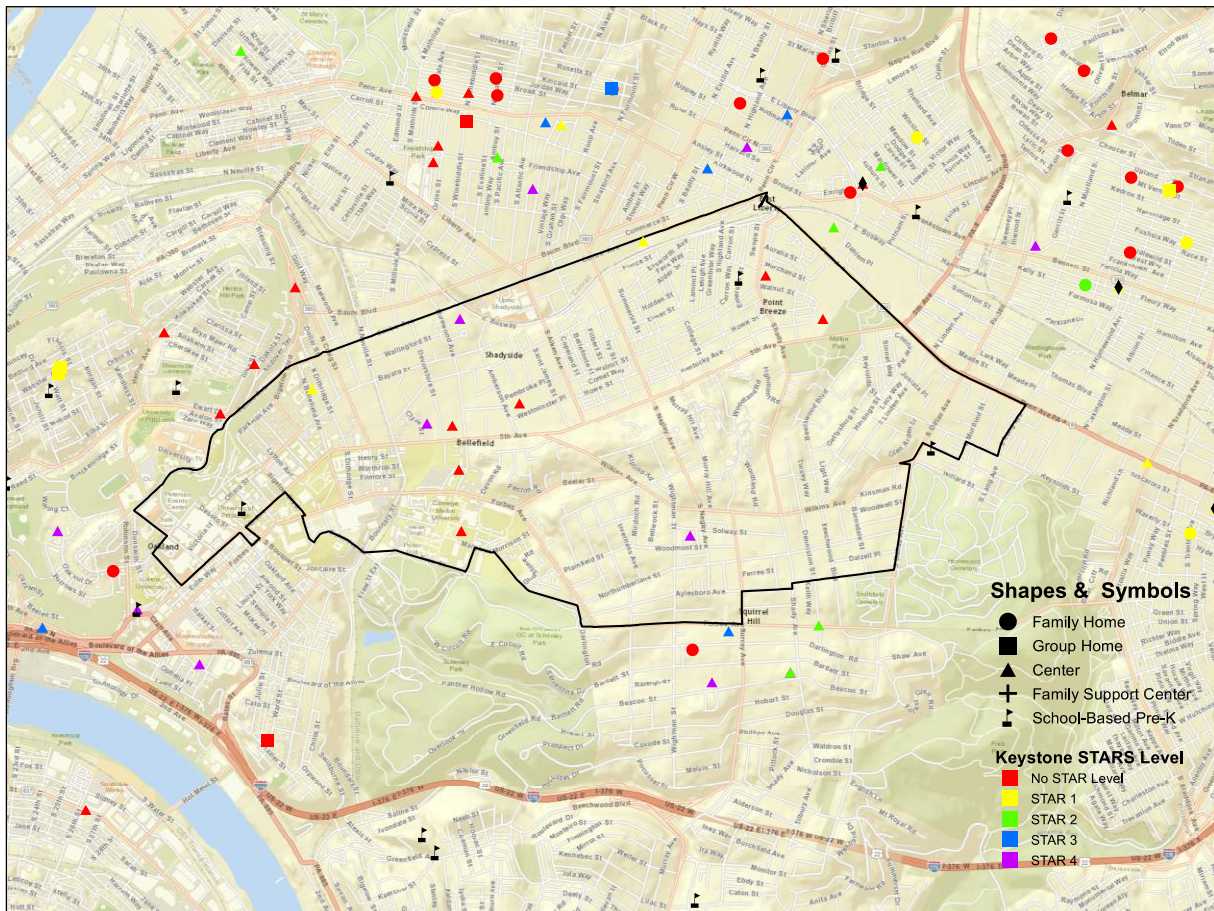
Census Tract	Total Poverty Rate	Social		Education		Economic			Wealth		Index Count
		Percent of Single Parents	Percent Disconnected 16-19 Year Olds	Percent of Population Older than 25 with less than HS Degree	Percent of Population 25 and over with at least a college degree	Percent of Households with Wage Incomes	Percent of Children Living in Poverty	Percent of Owner Occupied Housing	Percent Household with Interest, Rent or Dividend Income	Percent of Heads of Households Receiving Public Assistance	
203	3.8	No	No	No	No	No	No	Yes	No	No	1
1106	9.3	No	No	No	No	No	No	No	No	No	0
1018	1.6	No	No	No	No	No	No	No	No	No	0
1102	8.9	No	No	No	No	No	No	No	No	No	0
802	12.6	No	No	Yes	No	No	No	No	No	No	1
804	21.6	Yes	No	No	No	No	No	Yes	No	No	2
809	14.2	No	Yes	No	No	No	No	Yes	No	No	2
806	15.3	No	No	No	No	No	No	Yes	No	No	1
605	6.2	No	No	No	No	No	No	No	No	No	0
902	11.1	No	No	No	No	No	No	No	No	No	0
903	31.9	Yes	No	No	No	No	Yes	No	No	No	2
1011	27.5	No	No	No	No	No	No	No	No	No	0
603	42.5	Yes	Yes	No	No	No	Yes	Yes	Yes	No	5
9810	0	No	No	No	Yes	No	No	No	Yes	No	2

City Council District 8

Councilman Gillman

Population: 34,888
Population 0-5: 1,192
Percentage of Population 0-5: 3.8%

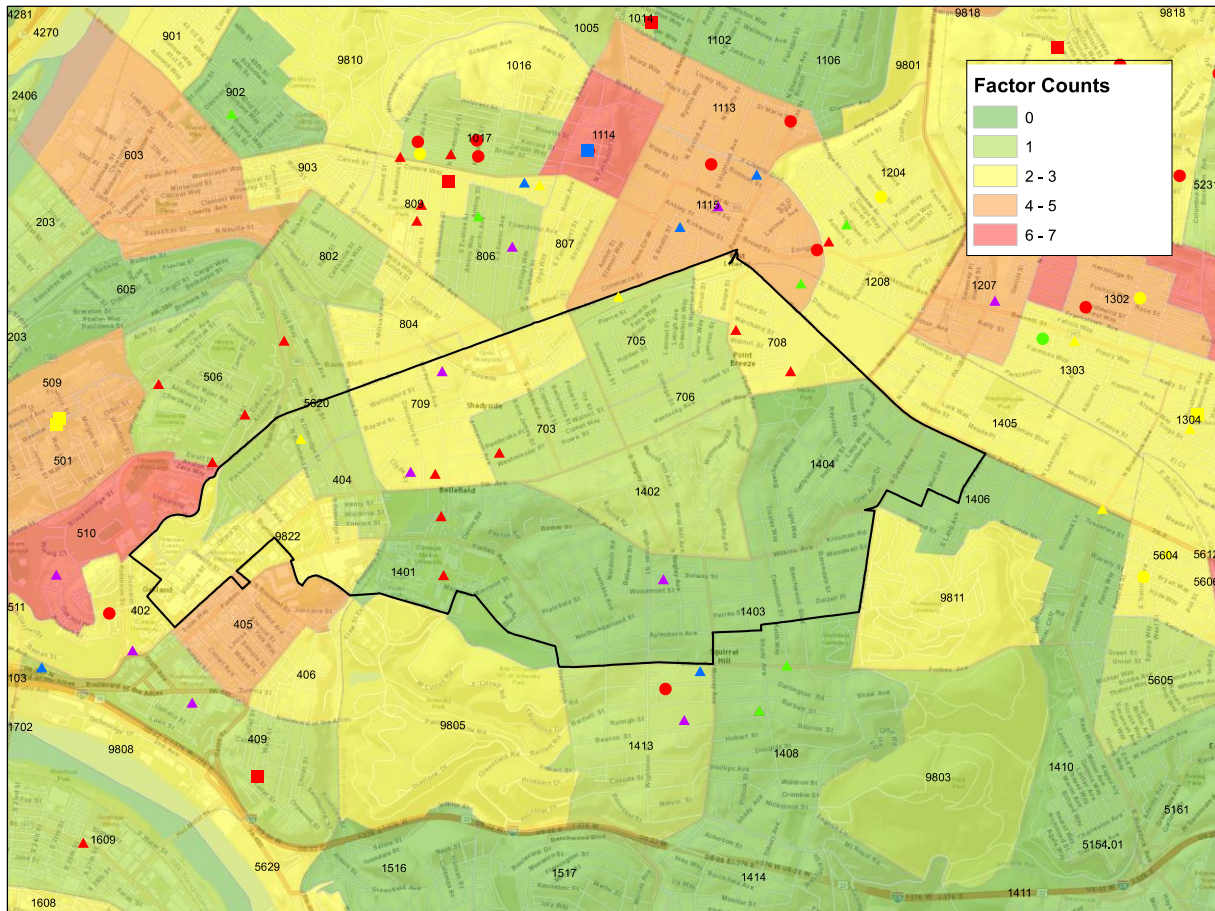
District 8 Child Care Providers



Child Care Providers by Provider Type and Keystone STARS Level

Provider Type	No STAR Level	Not participating	STAR 1	STAR 2	STAR 3	STAR 4	Total
Child Care Center	2	4	2	0	0	3	11
Family Child Care Home	0	0	0	0	0	0	0
Group Child Care Home	0	0	0	0	0	0	0
Total	2	4	2	0	0	3	11

Child Raising Vulnerability Index and Child Care Providers



Child Raising Vulnerability Index by Census Tract

Census Tract	Total Poverty Rate	Social		Education		Economic			Wealth		Index Count
		Percent of Single Parents	Percent Disconnected 16-19 Year Olds	Percent of Population Older than 25 with less than HS Degree	Percent of Population 25 and over with at least a college degree	Percent of Households with Wage Incomes	Percent of Children Living in Poverty	Percent of Owner Occupied Housing	Percent Household with Interest, Rent or Dividend Income	Percent of Heads of Households Receiving Public Assistance	
706	15.4	No	No	No	No	No	No	Yes	No	No	1
1403	5.3	No	No	No	No	No	No	No	No	No	0
1404	3.5	No	No	No	No	No	No	No	No	No	0
404	39.4	No	No	No	No	Yes	No	No	No	No	1

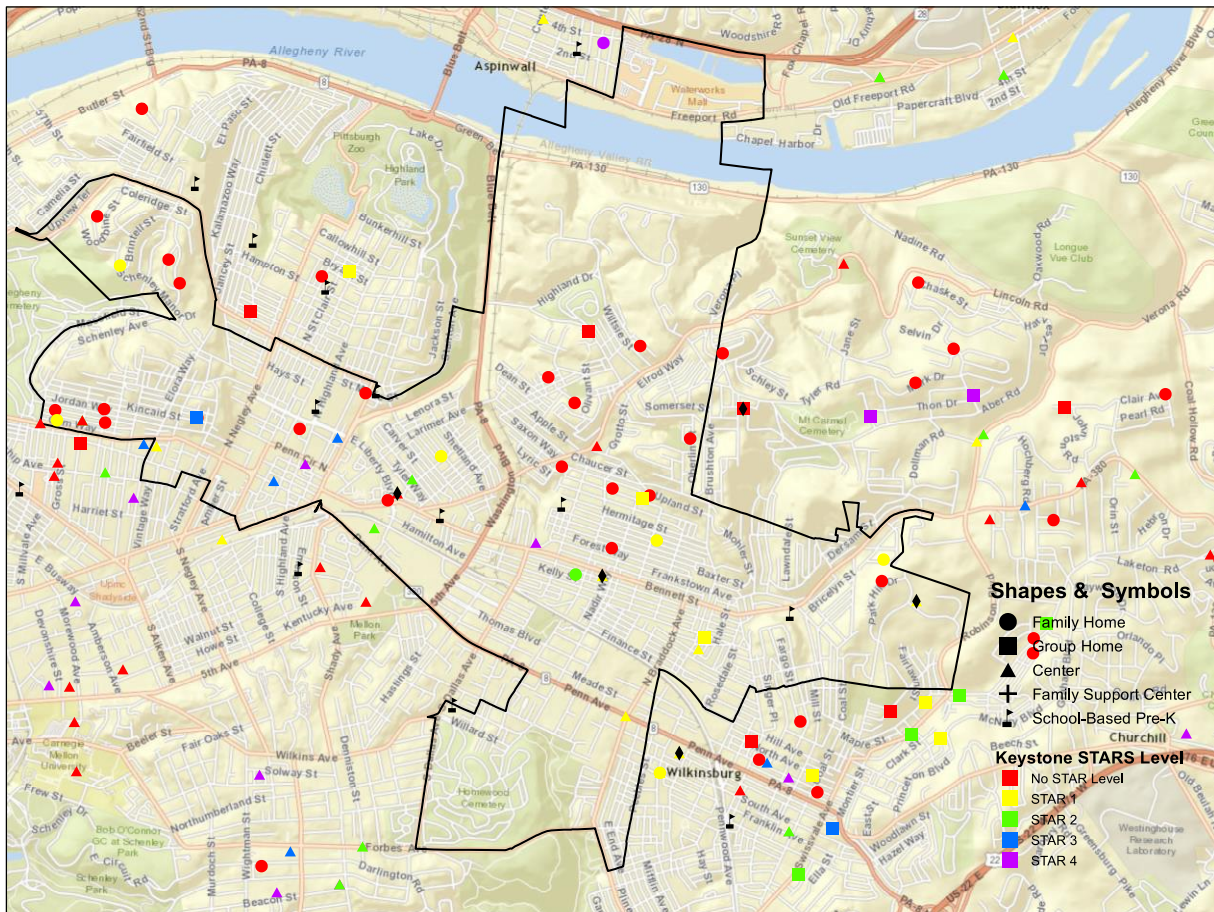
Census Tract	Total Poverty Rate	Social		Education		Economic			Wealth		Index Count
		Percent of Single Parents	Percent Disconnected 16-19 Year Olds	Percent of Population Older than 25 with less than HS Degree	Percent of Population 25 and over with at least a college degree	Percent of Households with Wage Incomes	Percent of Children Living in Poverty	Percent of Owner Occupied Housing	Percent Household with Interest, Rent or Dividend Income	Percent of Heads of Households Receiving Public Assistance	
703	13.3	No	No	No	No	No	No	Yes	No	No	1
705	22.1	No	No	No	No	No	No	Yes	No	No	1
708	22.2	No	Yes	No	No	No	No	Yes	No	No	2
1401	16.2	No	No	No	No	No	No	No	No	No	0
1402	16.4	No	No	No	No	No	No	Yes	No	No	1
709	23.1	No	Yes	No	No	No	No	Yes	No	No	2
9822	54.5	No	No	No	No	No	No	Yes	Yes	No	2

City Council District 9

Councilman Burgess

Population: 32,908
Population 0-5: 2526
Percentage of Population 0-5: 7.7%

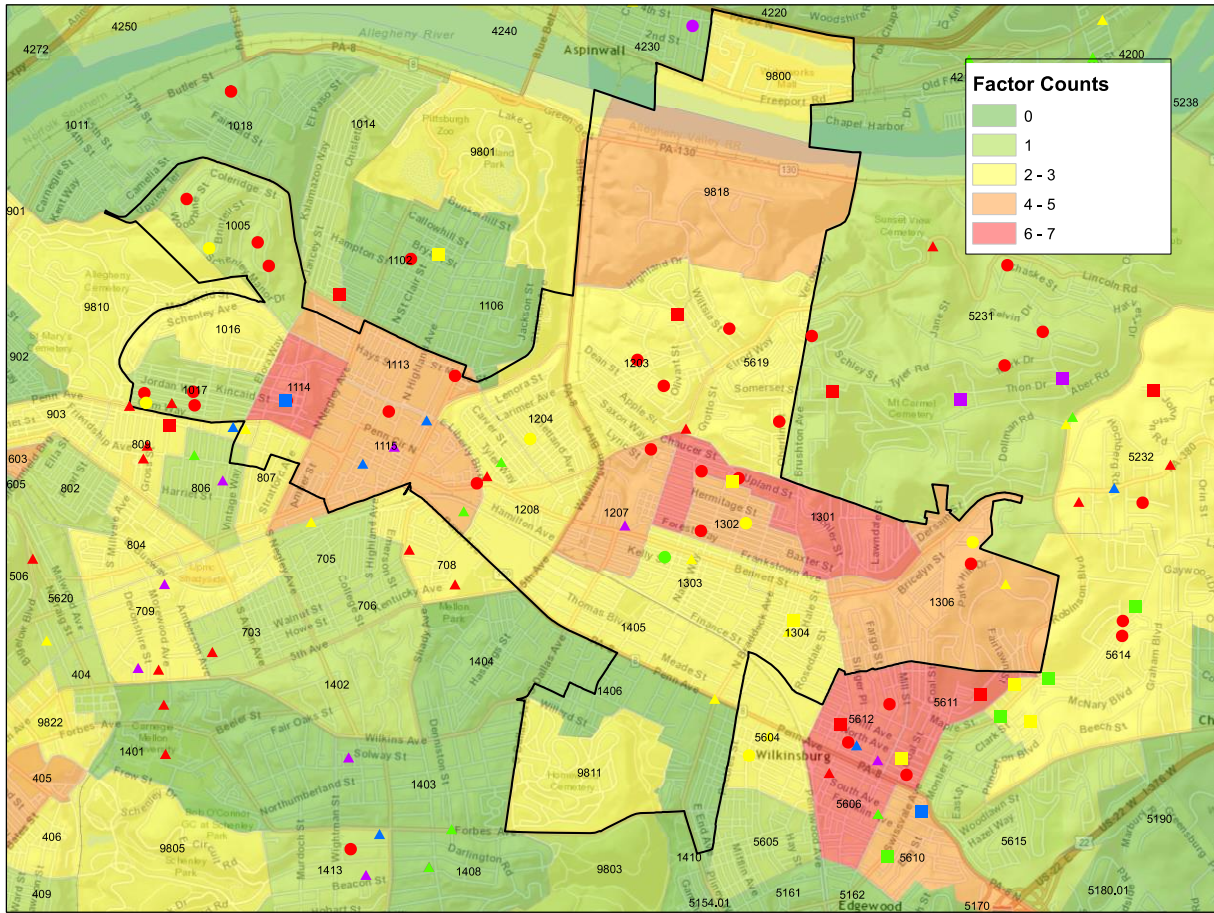
District 9 Child Care Providers



Child Care Providers by Provider Type and Keystone STARS Level

Provider Type	No STAR Level	STAR 1	STAR 2	STAR 3	STAR 4	Total
Child Care Center	5	5	3	2	2	17
Family Child Care Home	19	5	1	0	0	25
Group Child Care Home	1	2	0	1	0	4
Total	25	12	4	3	2	46

Child Raising Vulnerability Index and Child Care Providers



Child Raising Vulnerability Index by Census Tract

Census Tract	Social		Education		Economic			Wealth		Index Count
	Percent of Single Parents	Percent Disconnected 16-19 Year Olds	Percent of Population Older than 25 with less than HS Degree	Percent of Population 25 and over with at least a college degree	Percent of Households with Wage Incomes	Percent of Children Living in Poverty	Percent of Owner Occupied Housing	Percent Household with Interest, Rent or Dividend Income	Percent of Heads of Households Receiving Public Assistance	
9800	No	No	No	No	No	No	Yes	Yes	No	2
9818	No	No	Yes	Yes	No	No	Yes	Yes	No	4
1208	Yes	No	Yes	No	No	No	No	Yes	No	3
9811	No	No	No	No	No	No	Yes	Yes	No	2
5619	Yes	No	No	No	No	No	No	Yes	No	2

Census Tract	Social		Education		Economic			Wealth		Index Count
	Percent of Single Parents	Percent Disconnected 16-19 Year Olds	Percent of Population Older than 25 with less than HS Degree	Percent of Population 25 and over with at least a college degree	Percent of Households with Wage Incomes	Percent of Children Living in Poverty	Percent of Owner Occupied Housing	Percent Household with Interest, Rent or Dividend Income	Percent of Heads of Households Receiving Public Assistance	
1405	Yes	No	No	No	No	Yes	No	No	No	2
1115	Yes	No	Yes	No	Yes	No	Yes	No	No	4
1406	No	No	No	No	No	No	No	No	No	0
1016	Yes	No	No	No	No	Yes	No	Yes	No	3
1017	No	No	Yes	No	No	No	No	No	No	1
1302	Yes	No	No	No	No	Yes	No	Yes	Yes	4
1303	Yes	No	No	No	No	No	No	Yes	No	2
1304	No	No	Yes	No	Yes	No	No	No	No	2
1306	Yes	No	No	No	No	Yes	No	Yes	Yes	4
1301	Yes	Yes	No	No	Yes	Yes	No	Yes	Yes	6
1005	Yes	No	No	No	No	No	No	No	No	1
1113	Yes	No	Yes	No	No	No	Yes	Yes	No	4
1114	Yes	Yes	Yes	No	No	Yes	Yes	Yes	No	6
1203	Yes	No	No	No	No	No	No	No	Yes	2
1204	No	No	No	No	No	Yes	No	Yes	Yes	3
1207	Yes	No	Yes	No	No	Yes	Yes	Yes	No	5