

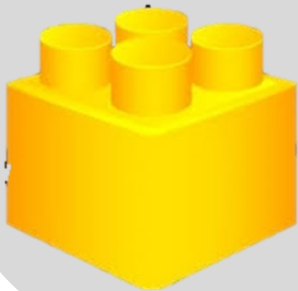
First EVER share event for regional child care providers!

SWAP MEET

Find what you need.
Get rid of what you don't.

SATURDAY, DECEMBER 14

7:30 AM - 2:30 PM AT PROVIDENCE CONNECTIONS
3113 BRIGHTON RD, PITTSBURGH, PA 15212



**REGISTER YOUR PROGRAM TODAY!
PLEASE FOLLOW THIS LINK:**

<https://forms.gle/6ij1K2w2NYh6qaeu9>

**WE'LL ARRANGE PICK UP AND DROP OFF OF
ANY ITEMS YOU WISH TO GAIN...OR LOSE!**



CONTACT ROSIE FOR MORE INFORMATION:

rosie@tryingtogether.org

412-567-3598

RULES

FOR LISTING ITEMS

We all have needs to fill. Many of us have something to offer. The more we can provide for each other locally, the more sustainable our programs grow.

The swap, a fun opportunity for programs to connect, socialize, and share, includes music, munchies, and more!

When you register, you'll provide us with a **"WANT"** list and/or a **"HAVE"** list. During the meet, we'll place the list in a central place. We also plan to separate the items at the swap into two main areas – "Free" and "For Barter."

What kind of used items can I swap?

You may list any **clean, gently-used learning materials, classroom furniture, and play equipment.**

Ideas for Items to Exchange (This is by no means a comprehensive list.)

- **Books**
- **Dramatic Play Clothes, Kitchenware, Theme Kits**
- **Program supplies:** tools, power strips, electronics, wall art
- **Classroom furniture; Gross motor equipment**
- **Toys:** games, puzzles, LEGO bricks
- **Art supplies**
- **Skills:** program enhancements of all kinds, such as cooking, music lessons, dancing/movement programs

What do I need to keep in mind when listing used items?

Make sure you clearly state in your listing the type, style, and quantity of the item. Describe the size of the item as well as the material from which it's made.

We reserve the right to inspect all merchandise. We reserve the right to refuse or return any item. All materials and equipment must be suitable for children.

Swappers shall conduct themselves in an orderly manner at all times.

Unless you request otherwise, we plan to donate unclaimed items to local resale shops.

PROGRAMS MUST REGISTER BY Friday, November 29.

THIS ALLOWS US TO MAKE ARRANGEMENTS FOR SET UP, PICK-UP, ORGANIZATION, AND DISPLAY.