

The logo for 'Trying Together' is located in the top left corner of the image. It features the words 'Trying' and 'Together' stacked vertically in a white, rounded, sans-serif font. The 'g' in 'Together' is stylized with a horizontal line through it.

Trying  
Together



unconference: 2021  
VIRTUAL  
fer

## Exceptional Care with a Team Approach to Inclusion

Young children thrive and grow in their natural learning environments, including children with developmental differences. Educators play a critical role in creating an inclusive and diverse environment for children to feel a sense of belonging, to feel valued as a member of the classroom, and to feel empowered to learn to their full ability. UnConference: Exceptional Care with a Team Approach to Inclusion dives into the importance of working together—with a collaboration between teachers, intervention specialists and parents/caregivers—to provide this environment for children to learn and grow in differentiated ways yet feel included in the group.

The keynote features Wendy Pardee, President and CEO of The Children's Institute, who will share how they have created a collaborative environment that provides a positive view on early intervention in an effort to bring different parties together in the best interest of the child. Her presentation is followed by a panel discussion featuring an educator, parent, and intervention specialist. Other workshops include: developing an understanding about early intervention, how to work with families, what you need to know during early intervention strategies, how to adapt lessons for different learning abilities, and more.

**January 19–29  
2021**

To learn more about this UnConference, the keynote speaker Wendy Pardee, and the workshop presenters, please visit: <http://bit.ly/exceptional-care>



### Thank You To Our Sponsors and Partners

A huge thank you to our series sponsor PNC Grow Up Great, to our co-host The Children's Institute, and to our workshop partners.



### About Trying Together

Trying Together supports high-quality care and education for young children by providing advocacy, community resources, and professional growth opportunities for the needs and rights of children, their families, and the individuals who interact with them. Trying Together works regionally (in Southwestern Pennsylvania) and takes its expertise and models to statewide and national audiences.

### About The Children's Institute

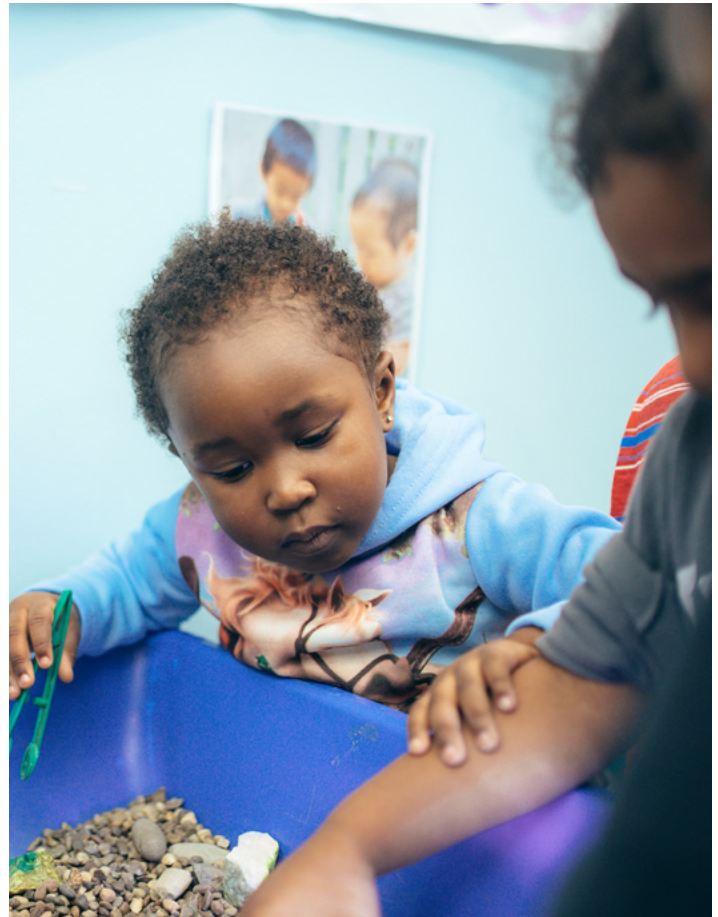
The Children's Institute of Pittsburgh has been changing young lives since 1902. For more than a century, we have been a leader in the care of children and young adults through healthcare, education, and family enrichment services. Our legacy is built upon supporting early childhood care, and we look forward to partnering with Trying Together for this special spring UnConference on early intervention services.

### How to Register

Register now to reserve your space! This UnConference is free and you may choose how many sessions you would like to attend. Participants must register in order to receive links to each workshop session via email. Registration can be completed by clicking the blue button at the top of the page. **Please register by no later than Friday, January 15, 2021.** If you have any questions, please email Yu-Ling at [conference@tryingtogether.org](mailto:conference@tryingtogether.org) for more information.

### What Do I Receive?

- PQAS/DHS credits and/or Act 48.
- Networking with colleagues.
- Hands-on, interactive workshop sessions.
- Refreshed or refined thinking about our work with young children.



## **UnConference Keynote: Exceptional Care with a Team Approach to Inclusion**

**Presented by: Trying Together and Children's Institute**

**Keynote speaker: Wendy Pardee  
Tuesday, January 19, 2021, 1:30–3:00 p.m.**

This keynote features Wendy Pardee, President and CEO of The Children's Institute, who will share how they have created a collaborative environment that provides a positive view on early intervention in an effort to bring different parties together in the best interest of the child. Her presentation is followed by a panel discussion featuring an educator, parent, and intervention specialist.

## **Transition and Educational Support in the Early Childhood Environment**

**Presented by: Kristina Berg and Loreleigh Elders, DART**

**Thursday, January 21, 2021, 6:30–8:00 p.m.**

Early Childhood Educators are an active and critical part of a child's early intervention team, but often lost in the process of transition and service planning. This presentation will provide an overview of the early intervention process, as children age out of the Infant / Toddler Early Intervention Program and transition into Preschool Early Intervention Support. We will provide practical examples and resources of ways to support children and families through the transition process, as well as ways to adapt the preschool classroom environment in order for all children to be successful.

## **Creating and Building Inclusive Support Teams for Children**

**Presented by: Serena Washington, Trying Together**

**Fri, January 22, 2021, 10:00–11:30 a.m.**

When thinking about what a team/collaboration approach looks like when working with children and families we must be open to asking the following questions: Why is it important to build a team for a child(ren)? What does the team/collaboration approach look like? Who and what do we need on the team/collaboration? How do we work and communicate as a team? In this workshop, join us for a robust discussion and learn strategies for creating an inclusive team to support your children.

## **How to Assess your Student Needs: Using the ASQ through the Lens of Infant Early Childhood Mental Health Program**

**Presented by: Gloria Rodriguez-Ransom, The PA Keys**

**Tuesday, January 26, 2021, 1:30–3:00 p.m.**

Through the expertise of the Infant Early Childhood Mental Health (IECMH) program, participants will receive an overview of the Ages & Stages Questionnaires with a particular emphasis on assessing children's social and emotional development. The developmental screening tools ASQ3 and ASQ:SE 2 are designed for children ages three months to five years and designed for use by early childhood educators and health care professionals. Attendees will learn how to administer and score the screener and share results of the screener with families and professional colleagues. In addition, recommendations for suggested resources will be shared if additional services are needed.

---

**More workshops to be added! Please visit <http://bit.ly/exceptional-care> for updates.**